

BENTLEY[®]

DOUBLE DOWN | SURE BET





Double Down

So you know you're sitting on a sure thing. You have three choices - walk away, play it safe, or take the all-or-nothing approach. We say go big! Double down and have no regrets. Why not? Besides, it's in the bag.



DOUBLE DOWN 4DD26, POINT SPREAD 404257, 12 FT - BROADLOOM

EXIT



SURE BET 4EB26, BONUS 404255, 18 IN X 36 IN - BRICK



Sure Bet

Have you ever had that deep-down, gut instinct that something was a sure thing? Maybe a new job opportunity or a winning hand in poker? There's nothing like knowing that you've got a lock on something before anyone else. It's the thrill of success that keeps us wanting to take risks. So go for it. You have our permission.





DOUBLE DOWN 4DD26, DEUCE 404254, 24 IN X 24 IN - MONOLITHIC

CASINO

1

CLOSE

REAR
CLOSE

STOP

RUN

STOP

STOP

AR
PEN



DOUBLE DOWN 4DD26, TRIFECTA 404261, 18 IN X 36 IN - HERRINGBONE





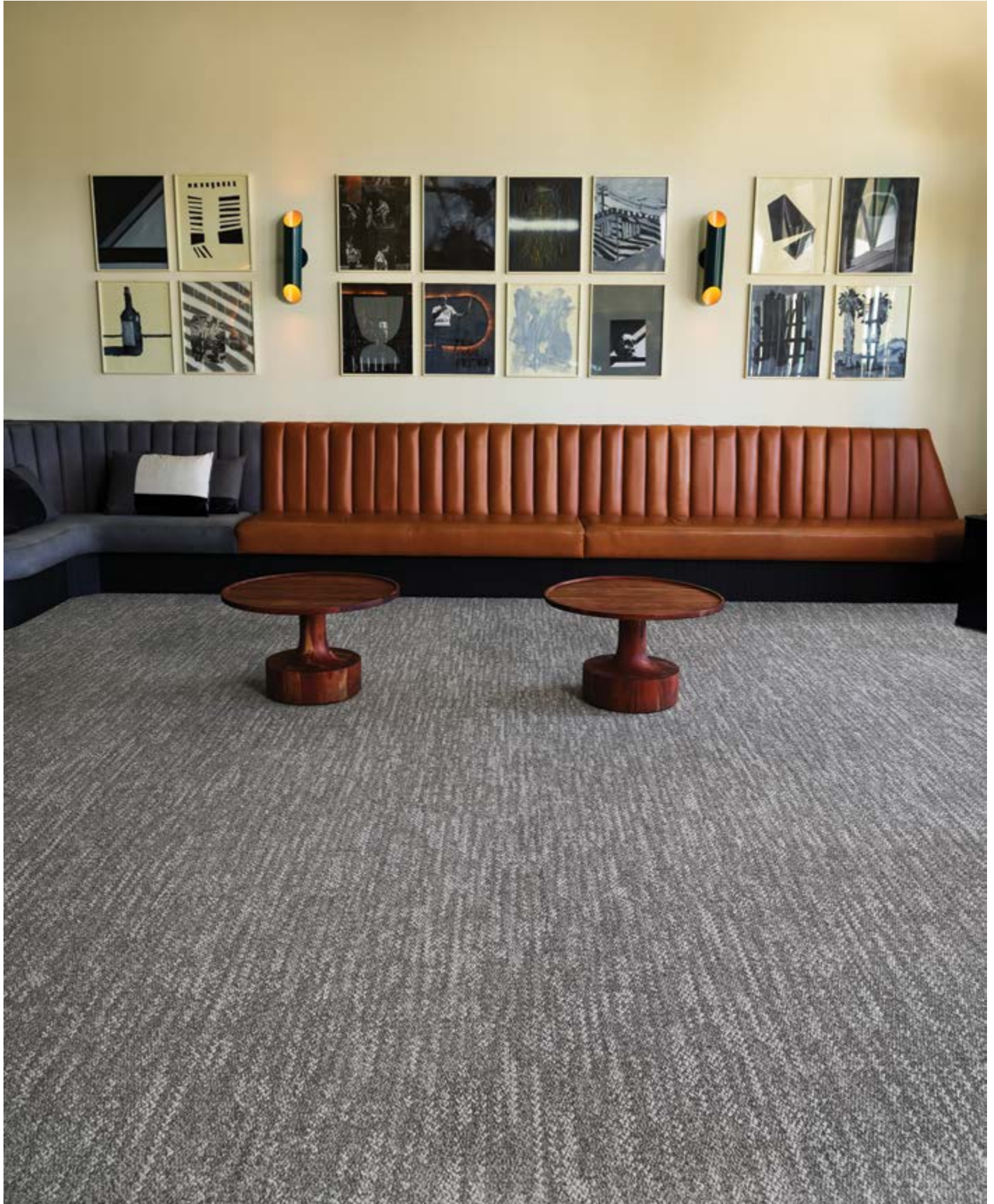
SURE BET 4EB26, ODDSMAKER 404259, 12 FT - BROADLOOM (RAILROAD INSTALLATION)



SURE BET 4EB26, BONUS 404255, 24 IN X 24 IN - BRICK







SURE BET 4EB26, BONUS 404255, 18 IN X 36 IN - ASHLAR





DOUBLE DOWN 4DD26, DEUCE 404254 (TOP), BONUS 404255 (BOTTOM)
24 IN X 24 IN - QUARTER TURN

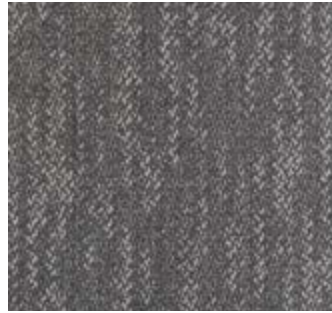
DOUBLE DOWN and SURE BET color line as featured in architect folder.



Jackpot 404250



Ante 404251



Parlay 404252



Deuce 404254



Bonus 404255



Under/Over 404256



Point Spread 404257



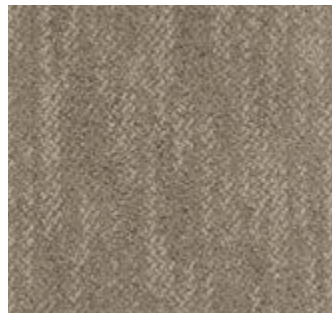
Bankroll 404258



Oddsmaker 404259



Wager 404260



Trifecta 404261



Long Shot 404262

SPECIFICATIONS

Style Number
 Product Construction
 Fiber
 Dye Method
 Backing Options
 Broadloom
 Carpet Tile

DOUBLE DOWN™

4DD26
 Tufted Textured Loop
 Antron® Lumena DNA™ Nylon Type 6,6
 Solution Dyed

High PerformancePC
 AFFIXX™ Hardback Tile
 AFIRMA II™ Hardback Tile
 NexStep® Cushion Tile

SURE BET™

4EB26
 Tufted Textured Loop
 Antron® Lumena DNA™ Nylon Type 6,6
 Solution Dyed

High PerformancePC
 AFFIXX™ Hardback Tile
 AFIRMA II™ Hardback Tile
 NexStep® Cushion Tile

Size Options

Broadloom
 Carpet Tile

12 ft (3,657 m)
 18 in x 36 in (45.72 cm x 91.44 cm)
 24 in x 24 in (60.96 cm x 60.96 cm)

12 ft (3,657 m)
 18 in x 36 in (45.72 cm x 91.44 cm)
 24 in x 24 in (60.96 cm x 60.96 cm)

Yarn Weight

Machine Gauge

26 oz/yd² (881.5 g/m²)
 1/12 in (47.2 ends/10 cm)

26 oz/yd² (881.5 g/m²)
 1/12 in (47.2 ends/10 cm)

Pile Height

High
 Medium
 Low

0.208 in (5.3 mm)
 0.140 in (3.6 mm)
 0.086 in (2.2 mm)

0.208 in (5.3 mm)
 0.140 in (3.6 mm)
 0.086 in (2.2 mm)

Stitches

Pile Density

10.7/in (42.1 ends/10 cm)
 8,856 oz/yd³

11.7/in (46.1 ends/10 cm)
 9,960 oz/yd³

Total Weight

High PerformancePC Broadloom
 AFFIXX™ Hardback Tile
 AFIRMA II™ Hardback Tile
 NexStep® Cushion Tile

61 oz/yd² (2,068.3 g/m²)
 85 oz/yd² (2,882.0 g/m²)
 73 oz/yd² (2,475.1 g/m²)
 103 oz/yd² (3,492.3 g/m²)

61 oz/yd² (2,068.3 g/m²)
 85 oz/yd² (2,882.0 g/m²)
 73 oz/yd² (2,475.1 g/m²)
 103 oz/yd² (3,492.3 g/m²)

Total Thickness

High PerformancePC Broadloom
 AFFIXX™ Hardback Tile
 AFIRMA II™ Hardback Tile
 NexStep® Cushion Tile

0.255 in (6.5 mm)
 0.240 in (6.1 mm)
 0.235 in (6.0 mm)
 0.355 in (9.0 mm)

0.255 in (6.5 mm)
 0.240 in (6.1 mm)
 0.235 in (6.0 mm)
 0.355 in (9.0 mm)

Pattern Repeat

Broadloom
 Carpet Tile

24 in (60.96 cm) (W) x 46 - 47/64 in (118.70 cm) (L)
 None

24 in (60.96 cm) (W) x 42 - 35/64 in (108.06 cm) (L)
 None

Radiant Panel

Smoke Density

Static

Flammability

Passes Class 1, ≥ 0.45 W/cm² (ASTM-E648)
 < 450 Dm corr (ASTM-E662), Flaming
 ≤ 3.5 kV (AATCC-134), Step
 Passes Methenamine Pill Test (CPSC-FF1-70)

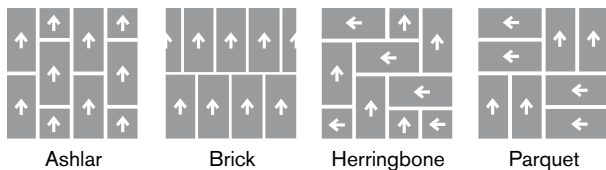
Passes Class 1, ≥ 0.45 W/cm² (ASTM-E648)
 < 450 Dm corr (ASTM-E662), Flaming
 ≤ 3.5 kV (AATCC-134), Step
 Passes Methenamine Pill Test (CPSC-FF1-70)

CE Mark excludes AFFIXX™ Hardback Tile.

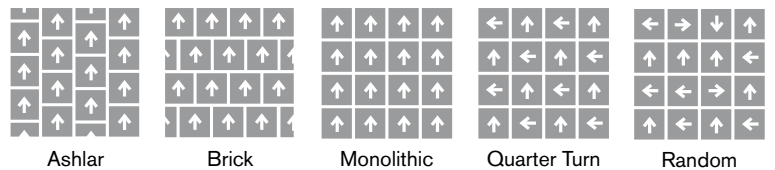


RECOMMENDED CARPET TILE INSTALLATION METHODS

18 in x 36 in



24 in x 24 in



Bentley's carpet products are manufactured in our California mill, a LEED Existing Buildings: Operations and Maintenance Gold certified facility. Certificates for carpet products, including Cradle to Cradle™, NSF/ANSI Standard 140 - Sustainable Carpet Assessment (NSF 140), and CRI Green Label Plus are available in *Certifications* under the Sustainability section of our website. Information regarding our Environmental Product Declarations, Health Product Declarations, and Declare Labels can be found in *Transparency* under the Sustainability section of our website. For more information, including product warranties, please visit www.bentleymills.com.

Patterned carpet may require special attention by the installer to assure a suitable match, and must be addressed in the original labor quotation. Repositioning of carpet tiles may be necessary to ensure light or dark lines do not align at the seams. Products that go through the shearing process may result in a small loss of yarn weight. Slight variations in color among different production lots are normal and should be considered in the overall installation plan. Carpet specifications and components are subject to normal manufacturing tolerances and may change without notice. Product warranted in accordance with the terms and conditions of Bentley's standard printed warranty in effect at time product is sold. All other warranties, including without limitation any implied warranties of merchantability or fitness for a particular purpose, are hereby disclaimed. Made in USA. Warning: unauthorized reproduction of this carpet design constitutes copyright infringement. ©2019 Bentley Mills, Inc.

Need additional samples or information? 800.423.4709 | BENTLEYMILLS.COM
 (BK-CP-0519)



SLOT

CONCORDE

CONCORDE

CONCORDE SLOT

CONCORDE SLOT

CONCORDE

CONCORDE SLOT

SLOT

SLOT

CONCORDE SLOT

CONCORDE

800.423.4709 | BENTLEYMILLS.COM

14641 E. DON JULIAN ROAD, CITY OF INDUSTRY, CA 91746