



BENTLEY®

BUZZ WORTHY





LEFT

BUZZ WORTHY™
40W260620R
Camera Crew 400588
12 ft
BROADLOOM

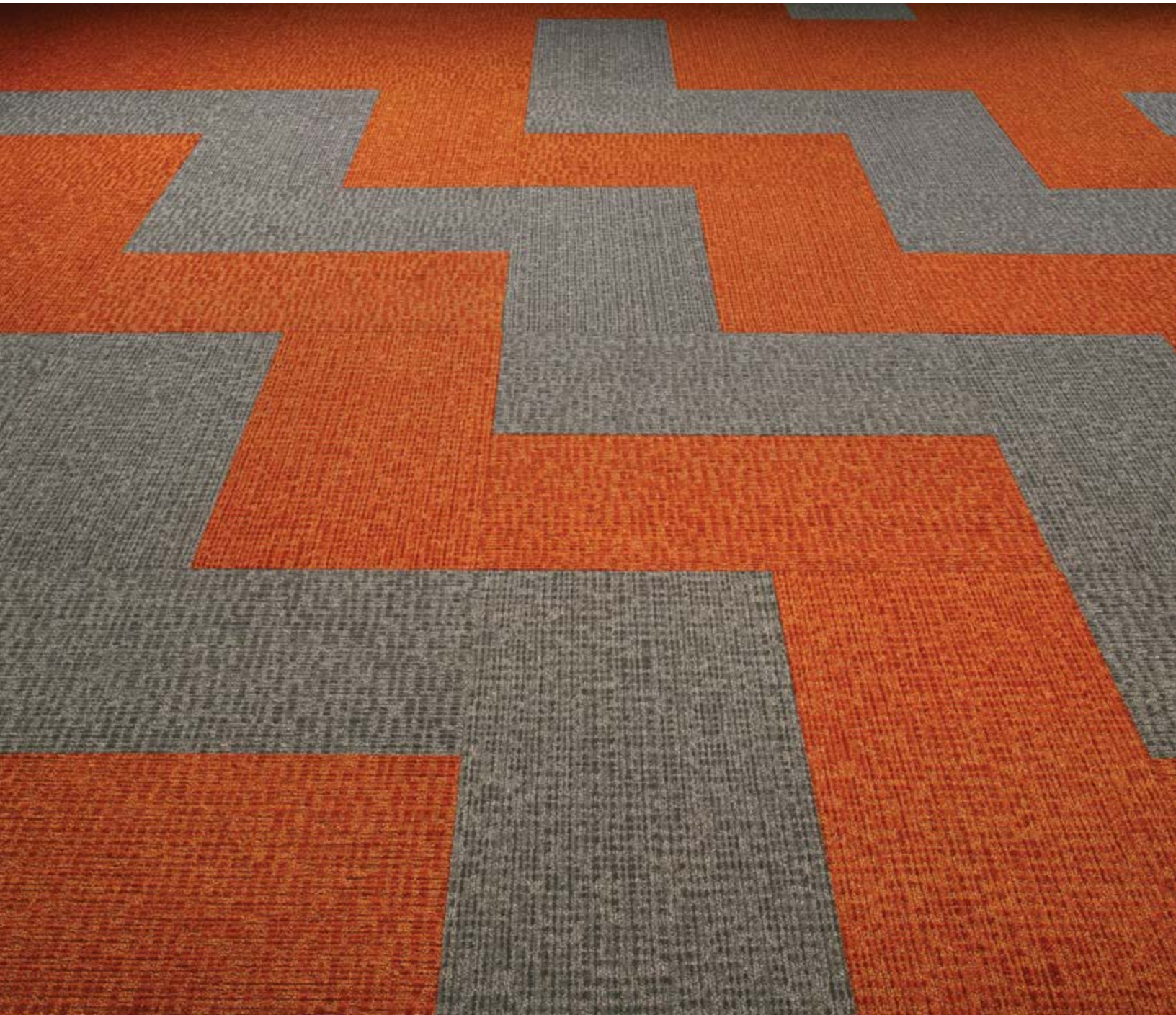
RIGHT

BUZZ WORTHY
40W260220T
Box Office Hit 400586
24 in x 24 in
QUARTER TURN





BUZZ WORTHY
40W260220T
Blockbuster 400591
24 in x 24 in
MONOLITHIC



LEFT

BUZZ WORTHY

4OW260AA0T

Money Maker 400590

Executive Producer 400592

18 in x 36 in

PARQUET

RIGHT

BUZZ WORTHY

4OW260AA0T

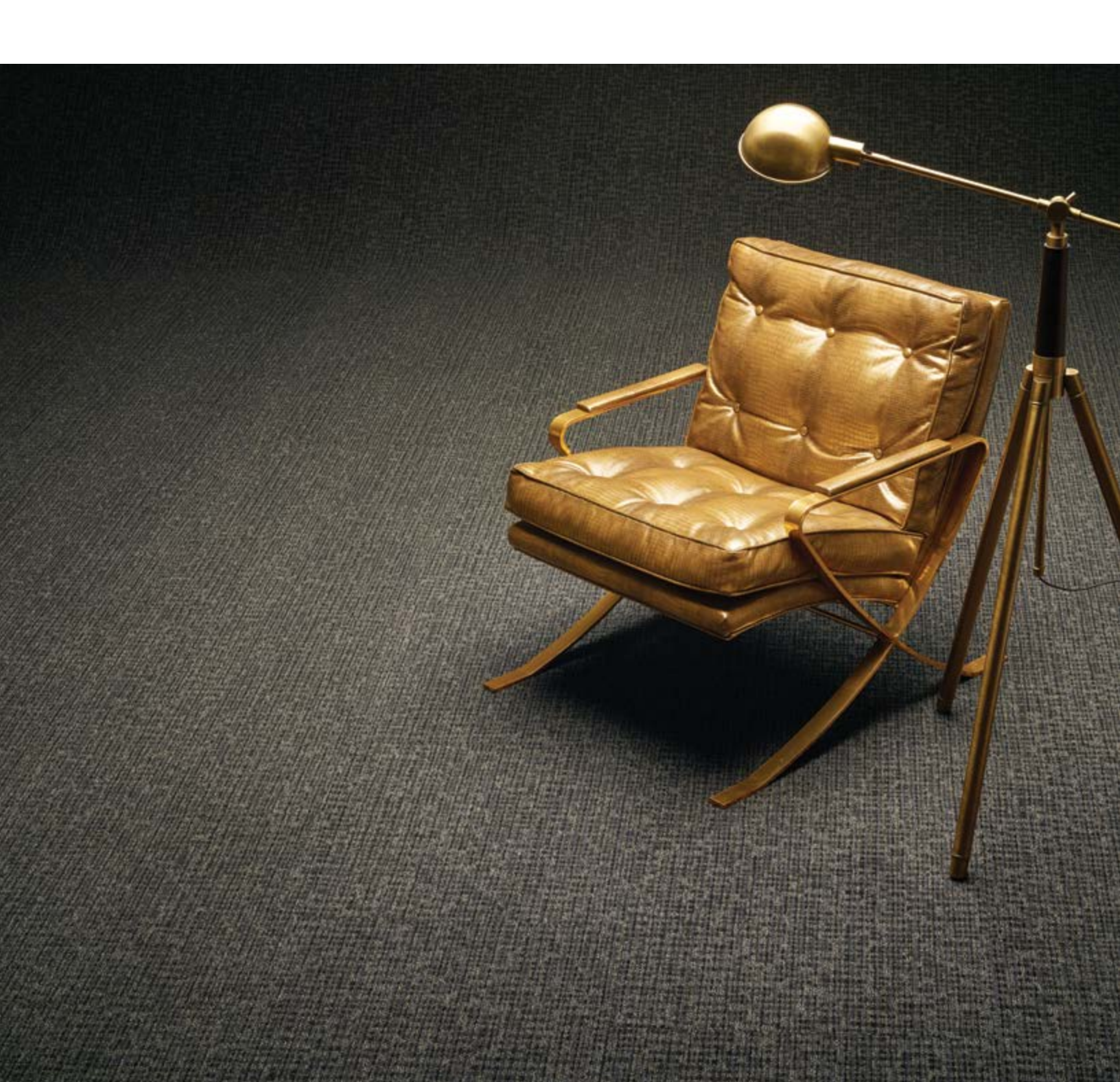
Dark Horse 400583

18 in x 36 in

HERRINGBONE







LEFT

BUZZ WORTHY

40W260220T

Method Actor 400581

24 in x 24 in

BRICK

RIGHT

BUZZ WORTHY

40W260220T

Blockbuster 400591

24 in x 24 in

ASHLAR

BUZZ WORTHY color line as featured in architect folder.



And The Winner Is 400580



Method Actor 400581



Top Billing 400582



Dark Horse 400583



Headliner 400584



Studio Chief 400585



Box Office Hit 400586



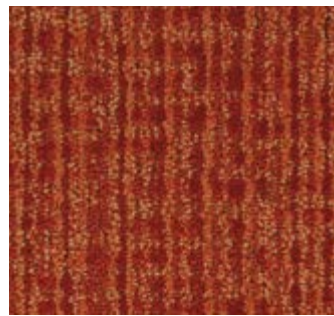
Director's Cut 400587



Camera Crew 400588



Feature Presentation 400589



Money Maker 400590



Blockbuster 400591



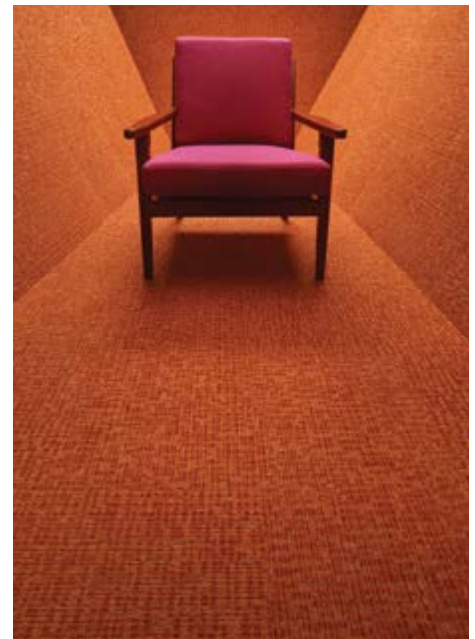
Executive Producer 400592

The printed images may not be an accurate reproduction of the product's actual colorways. We strive to offer an authentic representation, but images may vary according to press run and location lighting. These images are intended as a guide only. If you would like a sample of this product, please call Customer Care at 800.423.4709.

CURIO COLLECTION

SPECIFICATIONS

Style Number	4OW26
Product Construction	Tufted Tip-Sheared
Fiber	Antron® Legacy™ Type 6,6 Nylon
Dye Method	COLORCAST™
Soil/Stain Protection	XTERA™
Secondary Backing	
Broadloom	High PerformancePC
Carpet Tile	NexStep® Cushion Tile / AFIRMA™ Hardback Tile
Yarn Weight	26 oz/yd ² (881.5 g/m ²)
Machine Gauge	1/12 in (47.2 ends/10 cm)
Pile Height	
High	0.175 in (4.4 mm)
Medium	0.105 in (2.7 mm)
Low	0.050 in (1.3 mm)
Stitches	11.0/in (43.3 ends/10 cm)
Pile Density	8,410 oz/yd ³
Total Weight	
High PerformancePC Broadloom	61 oz/yd ² (2,068.3 g/m ²)
NexStep® Cushion Tile	99 oz/yd ² (3,492.3 g/m ²)
AFIRMA™ Hardback Tile	84 oz/yd ² (2,848.1 g/m ²)
Total Thickness	
High PerformancePC Broadloom	0.280 in (7.1 mm)
NexStep® Cushion Tile	0.380 in (9.7 mm)
AFIRMA™ Hardback Tile	0.260 in (6.6 mm)
Pattern Repeat	
Broadloom	24 in (60.96 cm) (W) x 36 in (91.44 cm) (L)
Carpet Tile	None
Radiant Panel	Passes Class 1, ≥ 0.45 W/cm ² (ASTM-E648)
Smoke Density	< 450 Dm corr (ASTM-E662), Flaming
Static	≤ 3.5 kV (AATCC-134), Step
Flammability	Passes Methenamine Pill Test (CPSC-FF1-70)



BUZZ WORTHY

4OW26AA8T

Money Maker 400590

18 in x 36 in

HERRINGBONE

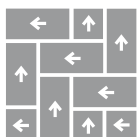
When selecting colors beyond those swatched in the architect folder, COLORCAST™ utilizes a standard order size of 50 square yards in tile or broadloom (based on availability) and up to 5% overage, with no upcharges. For more information, please contact your local account executive.

STYLE NUMBERS

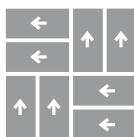
BUZZ WORTHY	BACKING	SIZE
4OW260620R	High PerformancePC Broadloom	12 ft (3.657 m) - Also available in Area Rugs
4OW260AA8T	NexStep® Cushion Tile	18 in x 36 in (45.72 cm x 91.44 cm)
4OW260220T	NexStep® Cushion Tile	24 in x 24 in (60.96 cm x 60.96 cm)
4OW260AA0K	AFIRMA™ Hardback Tile	18 in x 36 in (45.72 cm x 91.44 cm)
4OW260220K	AFIRMA™ Hardback Tile	24 in x 24 in (60.96 cm x 60.96 cm)

RECOMMENDED CARPET TILE INSTALLATION METHODS

18 in x 36 in

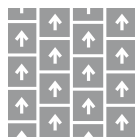


Herringbone

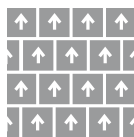


Parquet

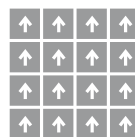
24 in x 24 in



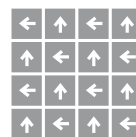
Ashlar



Brick



Monolithic



Quarter Turn

antron.



Bentley's High PerformancePC, NexStep® Cushion Tile, and AFIRMA™ Hardback Tile products are Cradle to Cradle Certified™ Silver. Bentley products are also certified under the NSF/ANSI Standard 140 – Sustainable Carpet Assessment (NSF 140). Six of Bentley's standard backing products are NSF 140 certified at the Gold level or above. Bentley's carpet products are manufactured in our California mill, a LEED for Existing Buildings: Operations and Maintenance (LEED®-EBOM) Gold certified facility. Please inquire about product warranties for specific backing options.

Patterned carpet may require special attention by the installer to assure a suitable match, and must be addressed in the original labor quotation. Products that go through the shearing process may result in a small loss of yarn weight. Slight variations in color among different production lots are normal and should be considered in the overall installation plan. Carpet specifications and components are subject to normal manufacturing tolerances and may change without notice. Technical performance characteristics are subject to adjustment based on results of post-manufacture testing. Product warranted in accordance with the terms and conditions of Bentley's standard printed warranty in effect at time product is sold. All other warranties, including without limitation any implied warranties of merchantability or fitness for a particular purpose, are hereby disclaimed. Made in USA. Warning: unauthorized reproduction of this carpet design constitutes copyright infringement. ©2017 Bentley Mills, Inc.

Need additional samples or information? 800.423.4709 | BENTLEYMILLS.COM
(BK-CP-OW-1217)

BENTLEY®



800.423.4709 | BENTLEYMILLS.COM

14641 E. DON JULIAN ROAD, CITY OF INDUSTRY, CA 91746