



BENTLEY®
REDUX

FAST TRACK *QUICK SHIP*



REDUX™ 4RXT40220T

Extension 402264

Addendum 402268

24 in x 24 in, BRICK

This installation was achieved by combining two
REDUX colors: 50% Extension and 50% Addendum.



REDUX
4RXT40AA0T
Companion 402265
18 in x 36 in
BRICK



LEFT

REDUX 4RXT40AA0T

Addendum 402268 and Follow-up 402270

MULTIPLAY™ 4MYT40AA0T

Ghost Ninja 401378

18 in x 36 in, HERRINGBONE

This installation was achieved by combining REDUX and MULTIPLAY: (top) 33% REDUX Addendum, (center) 33% MULTIPLAY Ghost Ninja, and (bottom) 33% REDUX Follow-up.

RIGHT

REDUX 4RXT40220T

Chain Reaction 402260

24 in x 24 in, RANDOM







LEFT
REDUX 4RXT409A0T
Sequel 402272
9 in x 36 in, HERRINGBONE

RIGHT
REDUX 4RXT409A0T
FIELD: Addendum 402268
ACCENT: Follow-up 402270
9 in x 36 in, ASHLAR

This installation was achieved by combining two
REDUX colors: 70% Addendum and 30% Follow-up.



LEFT

FIELD: MULTIPLAY 4MYT40AA0T

Avatar 401379

18 in x 36 in, BRICK

WITH ACCENTS:

REDUX 4RXT409A0T

Offshoot 402261 and Companion 402265

9 in x 36 in

This installation was achieved by utilizing MULTIPLAY as a field with REDUX accents: 50% MULTIPLAY Avatar, 25% REDUX Offshoot, and 25% REDUX Companion.

RIGHT

REDUX 4RXT40220T

Chain Reaction 402260

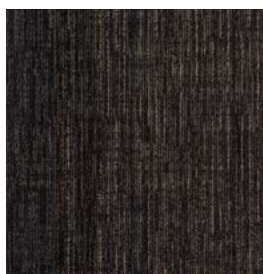
Addendum 402268

24 in x 24 in, BRICK

This installation was achieved by combining two REDUX colors: 50% Chain Reaction and 50% Addendum.



REDUX color line as featured in architect folder.



Chain Reaction 402260



Offshoot 402261



Continuum 402262



Sidekick 402263



Extension 402264



Companion 402265



Sibling 402266



Progression 402267



Addendum 402268



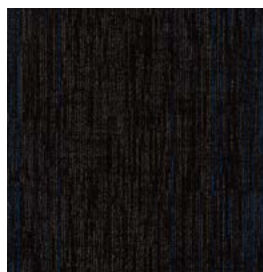
Partner 402269



Follow-up 402270



Corollary 402271



Sequel 402272

Redux Full Repeat Tile Grid Views

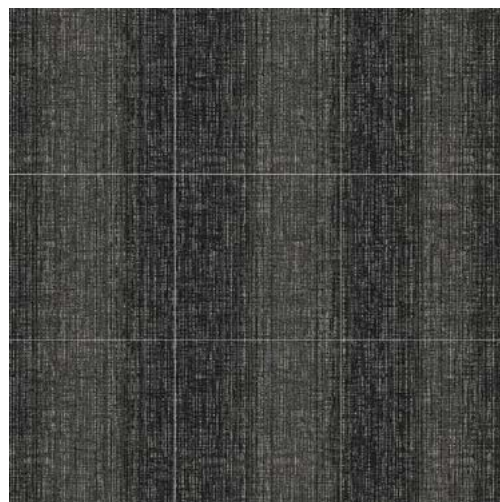
The Redux full width repeat consists of eight separate tiles for size 9 in x 36 in, four separate tiles for size 18 in x 36 in, and three separate tiles for size 24 in x 24 in. Samples will contain a portion of color. To view the full width repeat, please refer to the Product Tile View on the website.



9 in x 36 in



18 in x 36 in



24 in x 24 in

The printed images may not be an accurate reproduction of the product's actual colorways. Please note that images were taken in a loft, full of natural light. We strive to offer an authentic representation, but images may vary according to press run and location lighting. These images are intended as a guide only. If you would like a sample of this product, please call Customer Care at **800.423.4709**.

SPECIFICATIONS

REDUX™

Style Number	4RXT4
Product Construction	Tufted Textured Loop
Fiber	Antron® Lumena DNA™ Nylon Type 6,6
Dye Method	Solution Dyed
Backing Options	AFFIXX™ Hardback Tile AFIRMA II™ Hardback Tile NexStep® Cushion Tile
Size Options	9 in x 36 in (22.86 cm x 91.44 cm) 18 in x 36 in (45.72 cm x 91.44 cm) 24 in x 24 in (60.96 cm x 60.96 cm)
Machine Gauge	1/12 in (47.2 ends/10 cm)
Stitches	10.3/in (40.6 ends/10 cm)
Pile Density	6,335 oz/yd³
Total Weight	
AFFIXX™ Hardback Tile	74 oz/yd² (2,509.0 g/m²)
AFIRMA II™ Hardback Tile	62 oz/yd² (2,102.2 g/m²)
NexStep® Cushion Tile	92 oz/yd² (3,119.3 g/m²)
Total Thickness	
AFFIXX™ Hardback Tile	0.190 in (4.8 mm)
AFIRMA II™ Hardback Tile	0.185 in (4.7 mm)
NexStep® Cushion Tile	0.305 in (7.7 mm)
Pattern Repeat	None
Radiant Panel	Passes Class 1, ≥ 0.45 W/cm² (ASTM-E648)
Smoke Density	< 450 Dm corr (ASTM-E662), Flaming
Static	≤ 3.5 kV (AATCC-134), Step
Flammability	Passes Methenamine Pill Test (CPSC-FF1-70)

CE Mark excludes AFFIXX™ Hardback Tile.

Fast Track is Bentley's quick-ship program. This program is designed for maximum flexibility and expedited delivery to the client. Redux is available in 13 colorways in 18 in x 36 in and 24 in x 24 in NexStep® Cushion Tile and AFIRMA™ Hardback Tile. Orders of 1,500 square yards or less will be ready to ship within 10 business days of order. For orders exceeding 1,500 square yards, please contact our Customer Care Concierge for availability.

9 in x 36 in Tile option and AFFIXX™ Hardback Tile backing are excluded from the Fast Track program.

FAST TRACK
QUICK SHIP



REDUX 4RXT409A0T
FIELD: Addendum 402268
ACCENT: Follow-up 402270
9 in x 36 in, ASHLAR
This installation was achieved by combining two REDUX colors: 70% Addendum and 30% Follow-up.



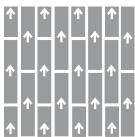
REDUX 4RXT40AA0T
Offshoot 402261
Companion 402265
18 in x 36 in, BRICK
This installation was achieved by combining two REDUX colors: 50% Offshoot and 50% Companion.

antron. 

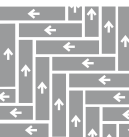


RECOMMENDED CARPET TILE INSTALLATION METHODS

9 in x 36 in

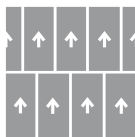


Ashlar

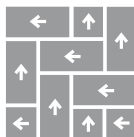


Herringbone

18 in x 36 in

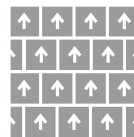


Brick

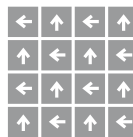


Herringbone

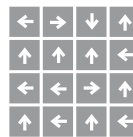
24 in x 24 in



Brick



Quarter Turn



Random

Bentley's carpet products are manufactured in our California mill, a LEED Existing Buildings: Operations and Maintenance Gold certified facility. Certificates for carpet products, including Cradle to Cradle™, NSF/ANSI Standard 140 - Sustainable Carpet Assessment (NSF 140), and CRI Green Label Plus are available in *Certifications* under the Sustainability section of our website. Information regarding our Environmental Product Declarations, Health Product Declarations, and Declare Labels can be found in *Transparency* under the Sustainability section of our website. For more information, including product warranties, please visit www.bentleymills.com.

Patterned carpet may require special attention by the installer to assure a suitable match, and must be addressed in the original labor quotation. Repositioning of carpet tiles may be necessary to ensure light or dark lines do not align at the seams. Products that go through the shearing process may result in a small loss of yarn weight. Slight variations in color among different production lots are normal and should be considered in the overall installation plan. Carpet specifications and components are subject to normal manufacturing tolerances and may change without notice. Product warranted in accordance with the terms and conditions of Bentley's standard printed warranty in effect at time product is sold. All other warranties, including without limitation any implied warranties of merchantability or fitness for a particular purpose, are hereby disclaimed. Made in USA. Warning: unauthorized reproduction of this carpet design constitutes copyright infringement. ©2019 Bentley Mills, Inc.

Need additional samples or information? 800.423.4709 | BENTLEYMILLS.COM
(BK-CP-1019)

BENTLEY®



800.423.4709 | BENTLEYMILLS.COM

14641 E. DON JULIAN ROAD, CITY OF INDUSTRY, CA 91746