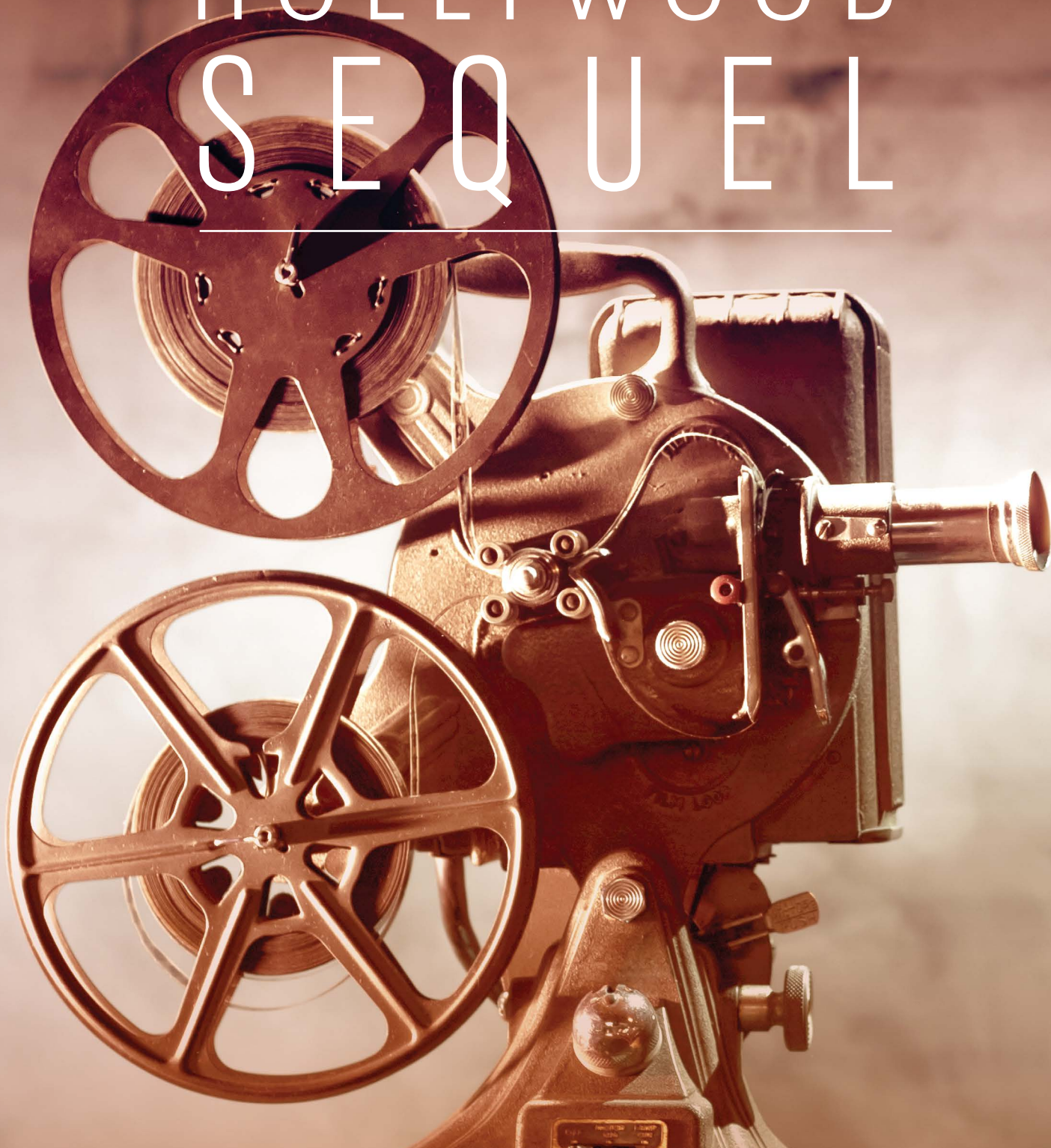

HOLLYWOOD SEQUEL



Hollywood Sequel™ embodies quiet sophistication with a hint of Old Hollywood glamour. Inspired by the rich history and fashion-forward culture of Los Angeles, this product captures the highlights of beaming spotlights on the bustling boulevard.

BENTLEY®
LOS ANGELES



HOLLYWOOD SEQUEL™

8HQ320630R

Cabrini Manor 801504

12 ft 6 in

BROADLOOM



HOLLYWOOD SEQUEL
8HQ320220T
Cabrini Manor 801504
24 in x 24 in
QUARTER TURN



HOLLYWOOD SEQUEL

8HQ320AA0T

Cabrini Manor 801504

18 in x 36 in

HERRINGBONE



HOLLYWOOD SEQUEL

8HQ32

Cabrini Manor 801504 (FRONT)

Gatewood Park 801507
(MIDDLE)

The Valentino 801515 (BACK)

HOLLYWOOD SEQUEL color line as featured in architect folder.



Movieland Villas 801500



Hollystar Tropics 801501



The Glentharp 801502



The Cagney 801503



Cabrini Manor 801504



Bungalow Village 801505



Huxley Terrace 801506



Gatework Park 801507



Rio Adelle 801508



Palomar Towers 801509



Villa Bonita 801510



Riviera Grove 801511



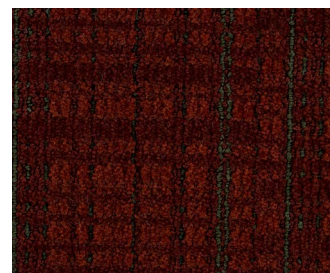
Nestor Court 801512



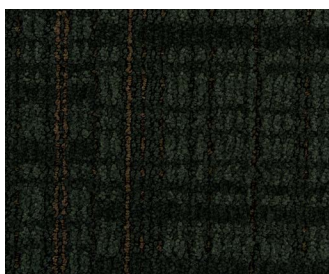
Empire West 801513



Camino Palms 801514



The Valentino 801515



Camrose Knoll 801516



Whitley Heights 801517

The printed images may not be an accurate reproduction of the products' actual colorways. We strive to offer an authentic representation, but images may vary according to press run. These images are intended as a guide only. If you would like a sample of this product, please call Customer Care at 800.423.4709.

HOLLYWOOD SEQUEL™

SPECIFICATIONS

Style Number	8HQ32
Product Construction	Tufted Tip-Sheared
Fiber	Ultron® Nylon 6,6
Dye Method	COLORCAST™
Soil/Stain Protection	XTERA™
Secondary Backing	
Broadloom	High PerformancePC
Carpet Tile	NexStep® Cushion Tile / AFIRMA™ Hardback Tile
Yarn Weight	32 oz/yd ² (1,085.0 g/m ²)
Machine Gauge	1/10 in (39.4 ends/10 cm)
Pile Height	
High	0.189 in (4.8 mm)
Medium	0.110 in (2.8 mm)
Low	0.053 in (1.3 mm)
Stitches	14.3/in (56.3 ends/10 cm)
Pile Density	7,063 oz/yd ³
Total Weight	
High PerformancePC Broadloom	67 oz/yd ² (2,271.7 g/m ²)
NexStep® Cushion Tile	105 oz/yd ² (3,560.1 g/m ²)
AFIRMA™ Hardback Tile	96 oz/yd ² (3,255.0 g/m ²)
Total Thickness	
High PerformancePC Broadloom	0.290 in (7.4 mm)
NexStep® Cushion Tile	0.390 in (9.9 mm)
AFIRMA™ Hardback Tile	0.270 in (6.9 mm)
Pattern Repeat	
Broadloom	12 in W x 4 57/64 in L (30.48 cm W x 12.42 cm L)
Carpet Tile	None
Radiant Panel	Passes Class 1, ≥ 0.45 W/cm ² (ASTM-E648)
Smoke Density	< 450 dm Corrected (ASTM-E662), Flaming
Static	≤ 3.5 kV (AATCC-134), Step
Flammability	Passes Methenamine Pill Test (CPSC-FF1-70)

When selecting colors beyond those swatched in the architect folder, COLORCAST™ utilizes a standard order size of 50 square yards in tile or broadloom (based on style availability) and up to 5% overage. For more information, please contact your local account executive.

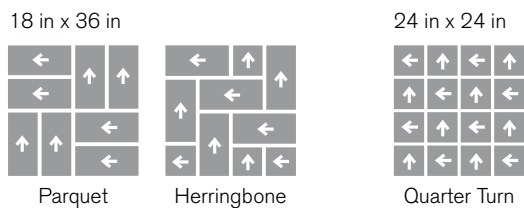
Hollywood Sequel is available in 18 standard colorways.

STYLE NUMBERS

HOLLYWOOD SEQUEL	BACKING	SIZE
8HQ320630R	High PerformancePC Broadloom	12 ft 6 in (3,810 m) - also available in area rugs
8HQ320AA0T	NexStep® Cushion Tile	18 in x 36 in (45.72 cm x 91.44 cm)
8HQ320220T	NexStep® Cushion Tile	24 in x 24 in (60.96 cm x 60.96 cm)
8HQ320AA0K	AFIRMA™ Hardback Tile	18 in x 36 in (45.72 cm x 91.44 cm)
8HQ320220K	AFIRMA™ Hardback Tile	24 in x 24 in (60.96 cm x 60.96 cm)



RECOMMENDED CARPET TILE INSTALLATION METHODS



Bentley's High PerformancePC, NexStep® Cushion Tile, and AFIRMA™ Hardback Tile products are Cradle to Cradle Certified™ Silver. Bentley products are also certified under the NSF/ ANSI Standard 140 – Sustainable Carpet Assessment (NSF 140). Six of Bentley's standard backing products are NSF 140 certified at the Gold level or above. Bentley's carpet products are manufactured in our California mill, a LEED for Existing Buildings: Operations and Maintenance (LEED®-EBOM) Gold certified facility. Please inquire about product warranties for specific backing options.

Patterned carpet may require special attention by the installer to assure a suitable match, and must be addressed in the original labor quotation. Products that go through the shearing process may result in a small loss of yarn weight. Slight variations in color among different production lots are normal and should be considered in the overall installation plan. Carpet specifications and components are subject to normal manufacturing tolerances and may change without notice. Technical performance characteristics are subject to adjustment based on results of post-manufacture testing. Product warranted in accordance with the terms and conditions of Bentley's standard printed warranty in effect at time product is sold. All other warranties, including without limitation any implied warranties of merchantability or fitness for a particular purpose, are hereby disclaimed. Made in USA. Warning: unauthorized reproduction of this carpet design constitutes copyright infringement. ©2016 Bentley Mills, Inc.

Need additional samples or information? 800.423.4709 | BENTLEYMILLS.COM
BK-CP-HQ-0116





800.423.4709 | BENTLEYMILLS.COM
14641 E. DON JULIAN ROAD, CITY OF INDUSTRY, CA 91746