



BENTLEY®

REPOSE





LEFT

REPOSE™

8RJ260AA0T

Awakening 800220

18 in x 36 in

MONOLITHIC

RIGHT

FIELD: RITUAL™

8RR260AA0T, 18 in x 36 in

Awakening 800220

MONOLITHIC

WITH ACCENTS:

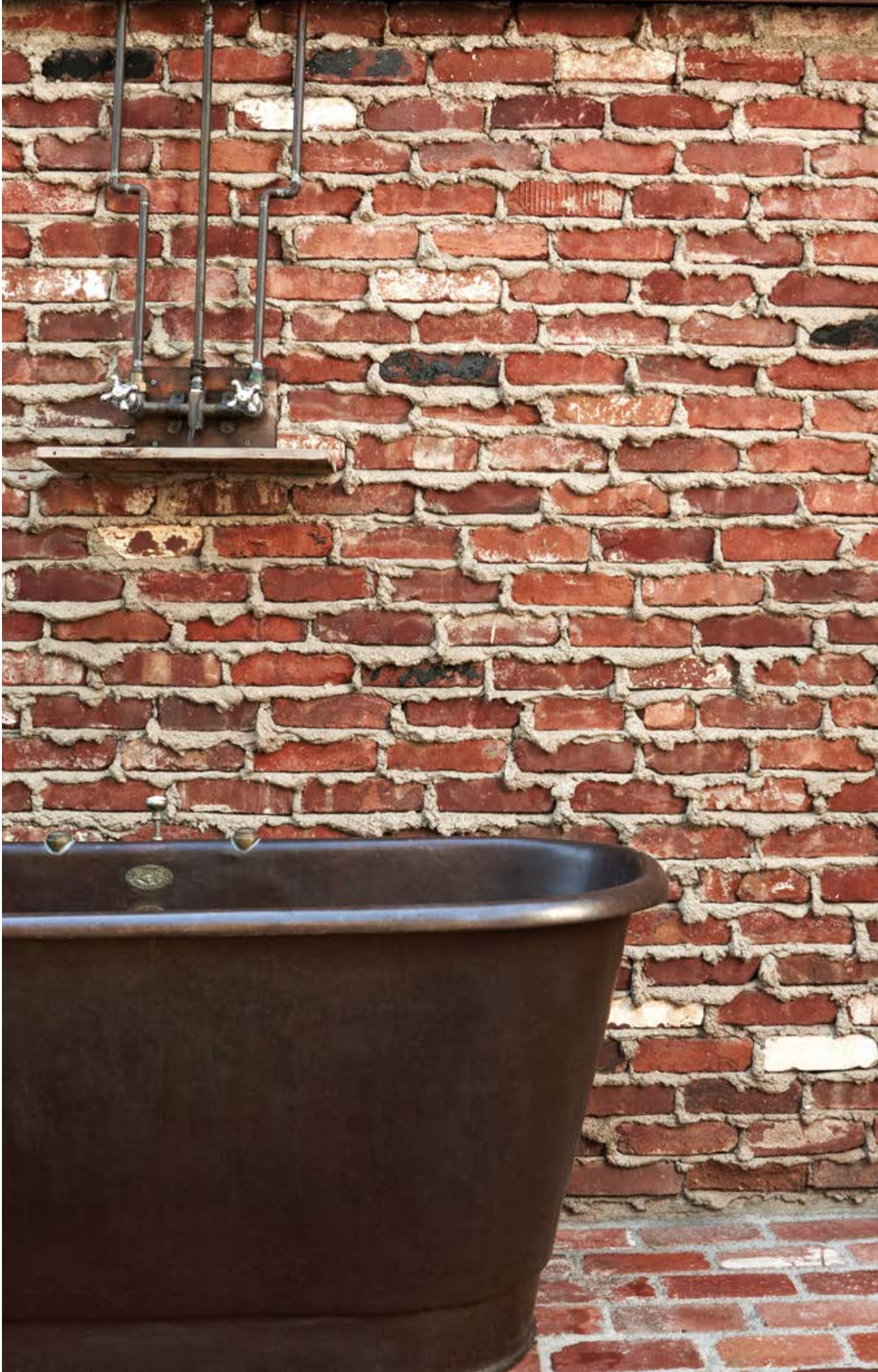
REPOSE

8RJ2609A0T, 9 in x 36 in

RITUAL

8RR2609A0T, 9 in x 36 in

Awakening 800220



RIGHT

FIELD: REPOSE

8RJ2609A0T, 9 in x 36 in

Awakening 800220

ASHLAR

WITH ACCENTS:

REPOSE

8RJ2609A0T, 9 in x 36 in

RITUAL

8RR2609A0T, 9 in x 36 in

Ceremony 800224





TOP
REPOSE, 8RJ2609A0T
Awakening 800220
RITUAL, 8RR2609A0T
Ceremony 800224
9 in x 36 in
HERRINGBONE

BOTTOM
REPOSE, 8RJ260AA0T
Awakening 800220
18 in x 36 in
ASHLAR



REPOSE
8RJ260AA0T
Awakening 800220
18 in x 36 in
BRICK





REPOSE
8RJ268AA8T
Awakening 800220
18 in x 36 in
BRICK



REPOSE

8RJ2609A0T

RITUAL

8RR2609A0T

Nirvana 800231

9 in x 36 in

HERRINGBONE



REPOSE

8RJ260220T

Awakening 800220

24 in x 24 in

BRICK





TOP

REPOSE

8RJ260630R

Awakening 800220

12 ft 6 in

BROADLOOM



BOTTOM LEFT

REPOSE

8RJ260220T

Ceremony 800224

24 in x 24 in

QUARTER TURN

BOTTOM RIGHT

REPOSE

8RJ260220T

Ceremony 800224

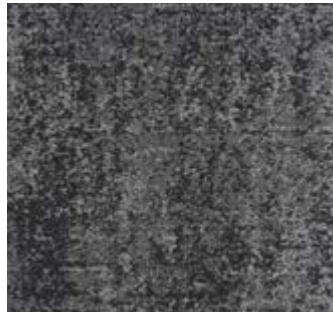
24 in x 24 in

MONOLITHIC

REPOSE color line as featured in architect folder.



Awakening 800220



Social Conduct 800221



Renewal 800222



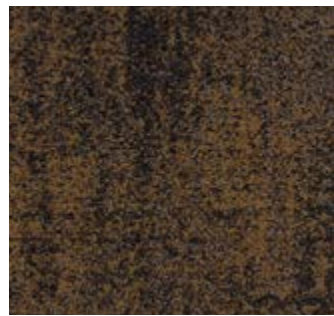
Folkways 800223



Ceremony 800224



Repetition 800225



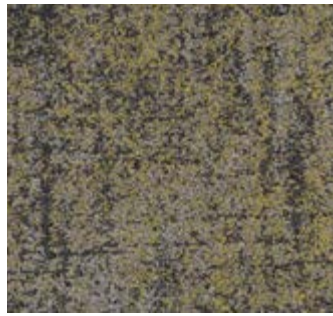
Grounded 800226



Daily Rite 800227



Composure 800228



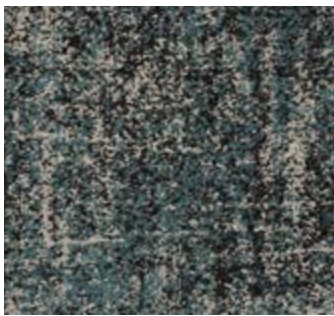
Harmony 800229



Routine 800230



Nirvana 800231



Devotion 800232

The printed images may not be an accurate reproduction of the product's actual colorways. Please note that images were taken in a loft, full of natural light. We strive to offer an authentic representation, but images may vary according to press run and location lighting. These images are intended as a guide only. If you would like a sample of this product, please call Customer Care at [800.423.4709](tel:800.423.4709).

THE OUTSKIRTS COLLECTION

SPECIFICATIONS

Style Number	8RJ26
Product Construction	Tufted Textured Loop
Fiber	Antron® Lumena™ Type 6,6 Nylon
Dye Method	Solution Dyed
Soil/Stain Protection	XTERA™
Secondary Backing	
Broadloom	High PerformancePC
Carpet Tile	NexStep® Cushion Tile/ AFIRMA™ Hardback Tile
Yarn Weight	25 oz/yd² (847.6 g/m²)
Machine Gauge	1/10 in (39.4 ends/10 cm)
Pile Height	
High	0.186 in (4.7 mm)
Medium	0.156 in (4.0 mm)
Low	0.082 in (2.1 mm)
Stitches	11.0/in (43.3 ends/10 cm)
Pile Density	9,204 oz/yd³
Total Weight	
High PerformancePC Broadloom	60 oz/yd² (2,034.3 g/m²)
NexStep® Cushion Tile	102 oz/yd² (3,458.4 g/m²)
AFIRMA™ Hardback Tile	83 oz/yd² (2,814.2 g/m²)
Total Thickness	
High PerformancePC Broadloom	0.280 in (7.1 mm)
NexStep® Cushion Tile	0.380 in (9.7 mm)
AFIRMA™ Hardback Tile	0.260 in (6.6 mm)
Pattern Repeat	
Broadloom	Pattern Match Not Required
Carpet Tile	None
Radiant Panel	Passes Class 1, ≥ 0.45 W/cm² (ASTM-E648)
Smoke Density	< 450 Dm corr (ASTM-E662), Flaming
Static	≤ 3.5 kV (AATCC-134), Step
Flammability	Passes Methenamine Pill Test (CPSC-FF1-70)

REPOSE™

STYLE NUMBERS

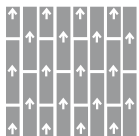
REPOSE	BACKING	SIZE
8RJ260630R	High PerformancePC Broadloom	12 ft 6 in (3.810 m) — Also available in Area Rugs
8RJ2609A0T	NexStep® Cushion Tile	9 in x 36 in (22.86 cm x 91.44 cm)
8RJ260AA0T	NexStep® Cushion Tile	18 in x 36 in (45.72 cm x 91.44 cm)
8RJ260220T	NexStep® Cushion Tile	24 in x 24 in (60.96 cm x 60.96 cm)
8RJ2609A0K	AFIRMA™ Hardback Tile	9 in x 36 in (22.86 cm x 91.44 cm)
8RJ260AA0K	AFIRMA™ Hardback Tile	18 in x 36 in (45.72 cm x 91.44 cm)
8RJ260220K	AFIRMA™ Hardback Tile	24 in x 24 in (60.96 cm x 60.96 cm)

antron. 

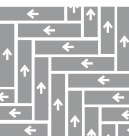


RECOMMENDED CARPET TILE INSTALLATION METHODS

9 in x 36 in

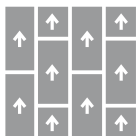


Ashlar

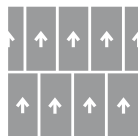


Herringbone

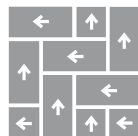
18 in x 36 in



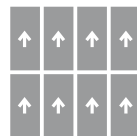
Ashlar



Brick

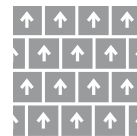


Herringbone

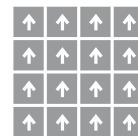


Monolithic

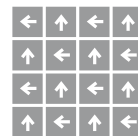
24 in x 24 in



Brick



Monolithic



Quarter Turn

Bentley's High PerformancePC, NexStep® Cushion Tile, and AFIRMA™ Hardback Tile products are Cradle to Cradle Certified™ Silver. Bentley products are also certified under the NSF/ANSI Standard 140 – Sustainable Carpet Assessment (NSF 140). Six of Bentley's standard backing products are NSF 140 certified at the Gold level or above. Bentley's carpet products are manufactured in our California mill, a LEED for Existing Buildings: Operations and Maintenance (LEED®-EBOM) Gold certified facility. Please inquire about product warranties for specific backing options.

Patterned carpet may require special attention by the installer to assure a suitable match, and must be addressed in the original labor quotation. Products that go through the shearing process may result in a small loss of yarn weight. Slight variations in color among different production lots are normal and should be considered in the overall installation plan. Carpet specifications and components are subject to normal manufacturing tolerances and may change without notice. Technical performance characteristics are subject to adjustment based on results of post-manufacture testing. Product warranted in accordance with the terms and conditions of Bentley's standard printed warranty in effect at time product is sold. All other warranties, including without limitation any implied warranties of merchantability or fitness for a particular purpose, are hereby disclaimed. Made in USA. Warning: unauthorized reproduction of this carpet design constitutes copyright infringement. ©2017 Bentley Mills, Inc.

Need additional samples or information? 800.423.4709 | BENTLEYMILLS.COM
(BK-CP-1117)

BENTLEY®



800.423.4709 | BENTLEYMILLS.COM

14641 E. DON JULIAN ROAD, CITY OF INDUSTRY, CA 91746