



BENTLEY[®]
LOS ANGELES

IN CONCERT SERIES

ELECTRIC NIGHTS, UNDER THE SPOTLIGHT, VELVET LOUNGE, STANDING OVATION



IN CONCERT SERIES

Design is a constant dialogue between "What if?" and "How soon?" You find the perfect pattern, only to find the palette isn't quite in sync. In Concert changes the tempo. We've taken Bentley's most requested patterns and composed them into four curated carpet tile collections, each tuned to a specific aesthetic frequency. By pairing proven textures with intentional colorways on a shared manufacturing platform, we've removed the friction of custom programs without sacrificing the soul of custom design. It's your go-to portfolio, reimagined to work in total harmony. No guesswork. No complexity. Just pure, effortless composition.

TUNED TO YOUR SPACE

ELECTRIC NIGHTS

Inspired by the way interiors shift after dark, catching, reflecting and redirecting light, Electric Nights distills energy to its essence. Two Bentley patterns emerge in two luminous color expressions, each designed to shape atmosphere through contrast and glow.

The palette moves between soft iridescence and brighter definition. One colorway diffuses light with subtle glow, while the other introduces crisp highlights and depth. Together, they bring a modern edge and a sense of movement to the floor. It is a series composed to amplify presence—graphic, refined and unmistakably alive.



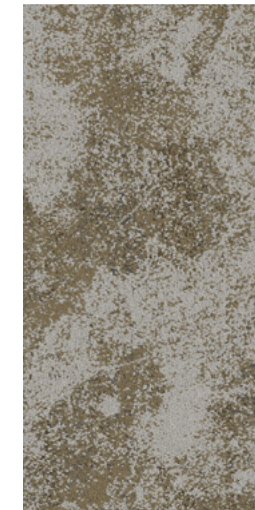
SCAN NOW TO
ORDER SAMPLES

ELECTRIC NIGHTS

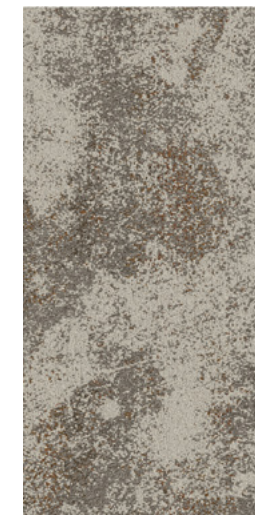




STYLE FEATURED: LC500
COLOR: OPALESCENT 407823
TILE SIZE: 18" X 36"
INSTALLATION METHOD: ASHLAR



Opalescent
407823



Radiant
407826



STYLE FEATURED: LC500
COLOR: OPALESCENT 407823
TILE SIZE: 18" X 36"
INSTALLATION METHOD: ASHLAR



Opalescent
407823



Radiant
407826

STYLE FEATURED: LC501
COLOR: OPALESCENT 407823
TILE SIZE: 24" X 24"
INSTALLATION METHOD: BRICK



STYLE FEATURED: LC502

COLOR: OPALESCENT 407823

TILE SIZE: 18" X 36"

INSTALLATION METHOD: BRICK



Opalescent
407823



Radiant
407826



STYLE FEATURED: LC502

COLOR: RADIANT 407826

TILE SIZE: 18" X 36"

INSTALLATION METHOD: BRICK

UNDER THE SPOTLIGHT

Presence doesn't always require a loud voice. Under the Spotlight explores the nuances of a spiced neutral palette across nine distinct textures. This collection is built for the choreography of a project: architectural structures that ground a room, contrasted by fluid patterns that introduce movement and flow.

It is a series designed for balance—knowing exactly when to take center stage and when to provide the perfect, warm backdrop for the rest of your vision to shine.



SCAN NOW TO
ORDER SAMPLES



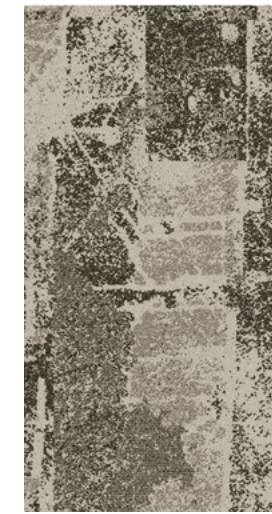


STYLE FEATURED: CC200

COLOR: JULIENNE 801542

TILE SIZE: 24" X 24"

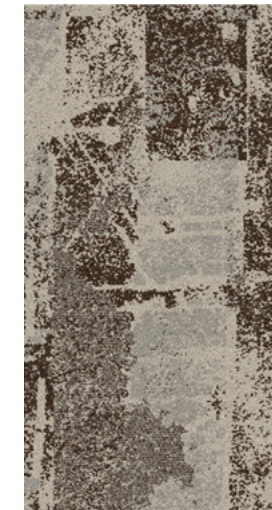
INSTALLATION METHOD: QUARTER TURN



Julienne
801542



Slice & Dice
801538



Carmelize
801543



Zest
801544

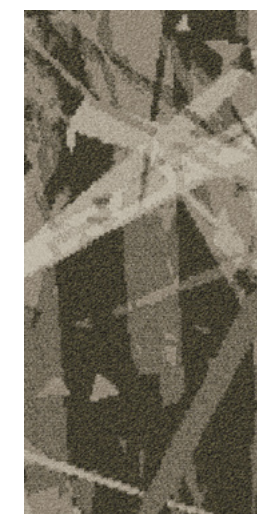


STYLE FEATURED: CC200

COLOR: ZEST 801544

TILE SIZE: 18" X 36"

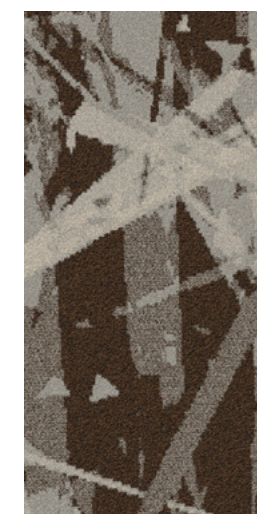
INSTALLATION METHOD: ASHLAR



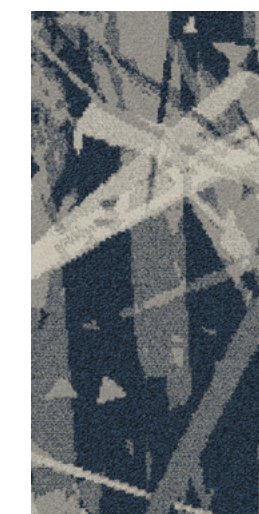
Julienne
801542



Slice & Dice
801538



Carmelize
801543



Zest
801544

STYLE FEATURED: CC201

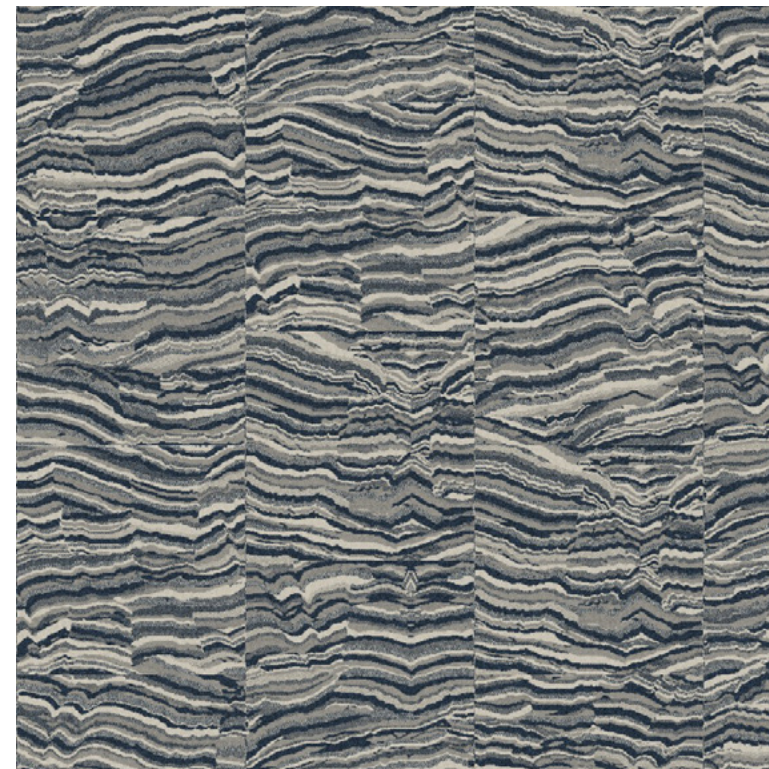
COLOR: SLICE & DICE 801538

TILE SIZE: 18" X 36"

INSTALLATION METHOD: MONOLITHIC



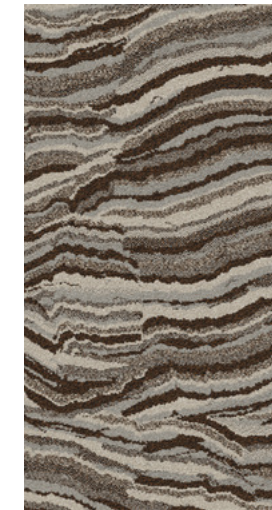
STYLE FEATURED: CC202
COLOR: CARMELIZE 801543
TILE SIZE: 18" X 36"
INSTALLATION METHOD: ASHLAR



Julienne
801542



Slice & Dice
801538



Carmelize
801543

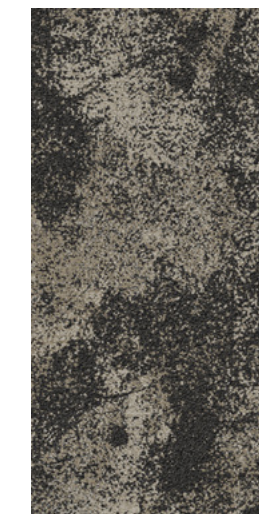


Zest
801544

STYLE FEATURED: CC202
COLOR: ZEST 801544
TILE SIZE: 24" X 24"
INSTALLATION METHOD: ASHLAR



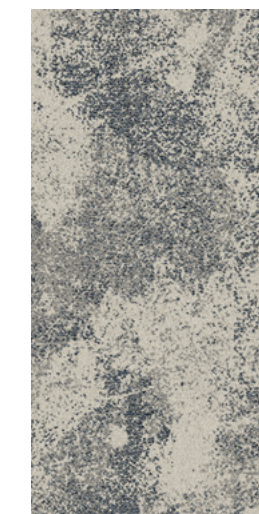
Julienne
801542



Slice & Dice
801538



Carmelize
801543



Zest
801544

STYLE FEATURED: CC203

COLOR: ZEST 801544

TILE SIZE: 18" X 36"

INSTALLATION METHOD: ASHLAR



STYLE FEATURED: CC204

COLOR: SLICE & DICE 801538

TILE SIZE: 24" X 24"

INSTALLATION METHOD: BRICK



Julienne
801542



Slice & Dice
801538



Carmelize
801543



Zest
801544

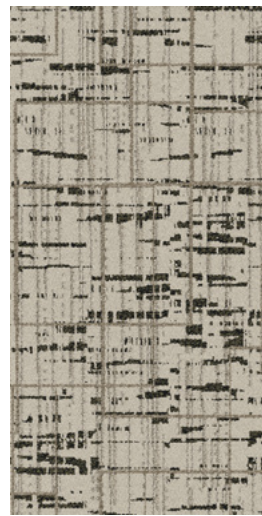


STYLE FEATURED: CC204

COLOR: ZEST 801544

TILE SIZE: 24" X 24"

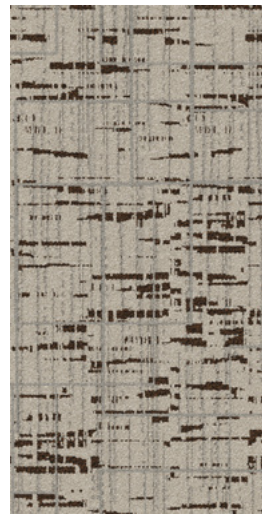
INSTALLATION METHOD: QUARTER TURN



Julienne
801542



Slice & Dice
801538



Carmelize
801543

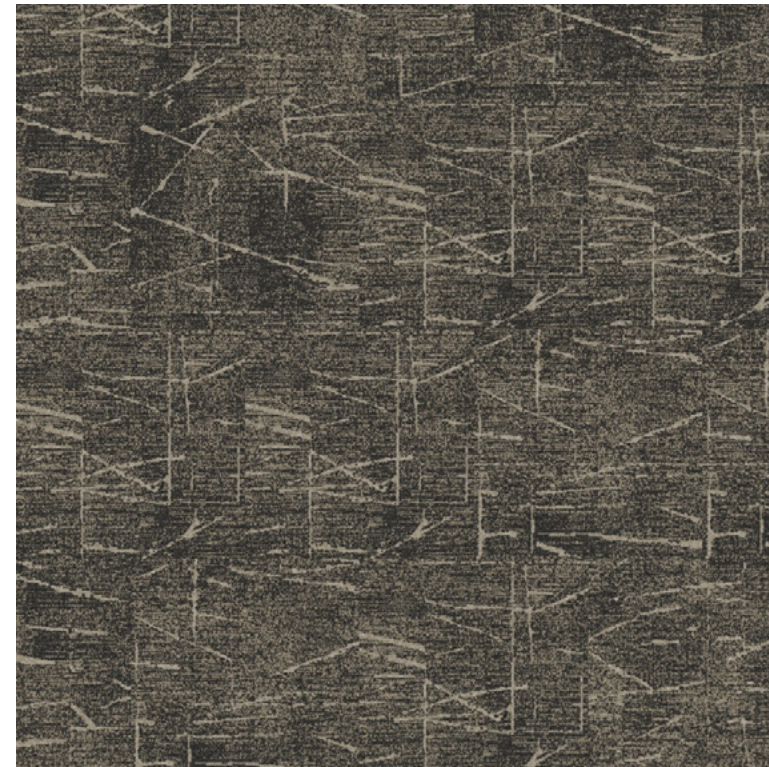


Zest
801544

STYLE FEATURED: CC205
COLOR: SLICE & DICE 801538
TILE SIZE: 24" X 24"
INSTALLATION METHOD: BRICK



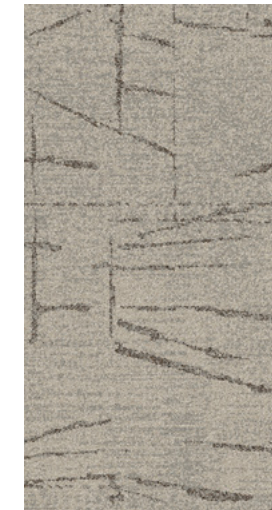
STYLE FEATURED: CC206
COLOR: CARMELIZE 801543
TILE SIZE: 18" X 36"
INSTALLATION METHOD: ASHLAR



Julienne
801542



Slice & Dice
801538

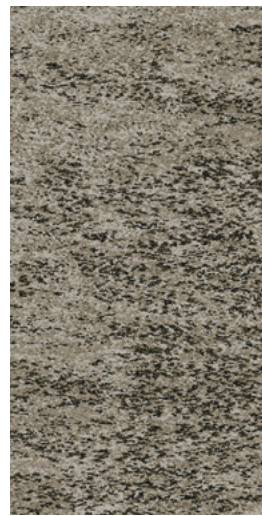


Carmelize
801543



Zest
801544

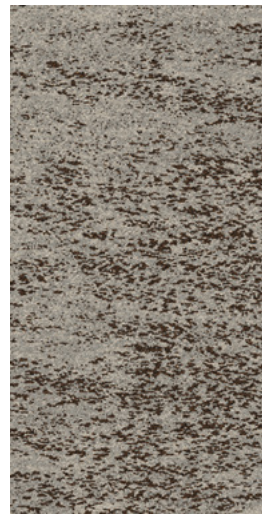
STYLE FEATURED: CC206
COLOR: SLICE & DICE 801538
TILE SIZE: 24" X 24"
INSTALLATION METHOD: BRICK



Julienne
801542



Slice & Dice
801538



Carmelize
801543



Zest
801544

STYLE FEATURED: CC207
COLOR: ZEST 801544
TILE SIZE: 18" X 36"
INSTALLATION METHOD: BRICK



STYLE FEATURED: CC208

COLOR: CARMELIZE 801543

TILE SIZE: 24" X 24"

INSTALLATION METHOD: BRICK



Julienne
801542



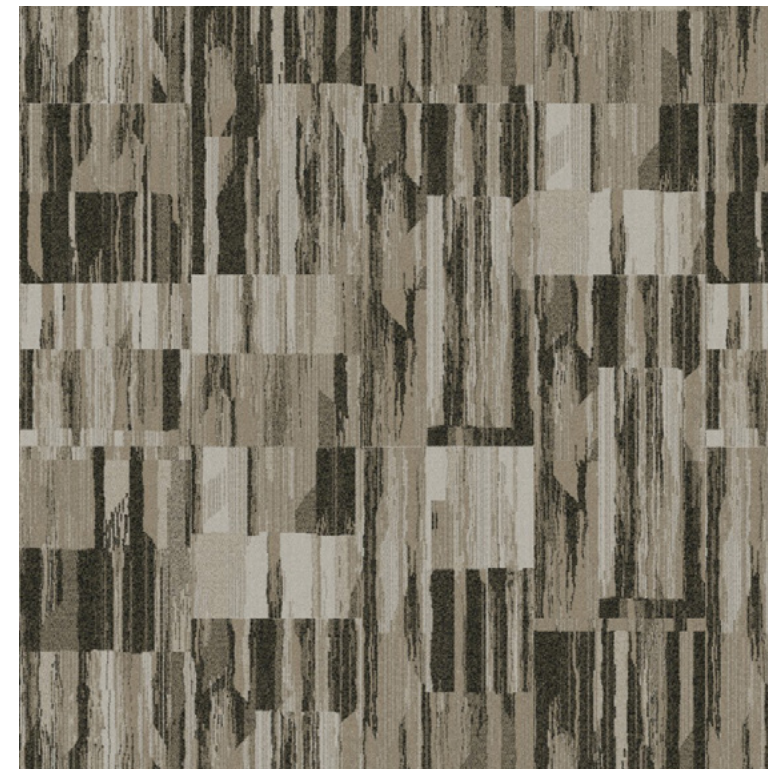
Slice & Dice
801538



Carmelize
801543



Zest
801544



STYLE FEATURED: CC208

COLOR: JULIENNE 801542

TILE SIZE: 18" X 36"

INSTALLATION METHOD: ASHLAR

THE VELVET LOUNGE

The Velvet Lounge is an invitation to slow the tempo. This collection explores layered texture across ten Bentley patterns in a refined palette of seven tones, moving effortlessly between warm and cool, light and shadow. The result is a quiet richness that feels both elevated and familiar.

Designed for depth rather than display, texture carries the composition. Patterns are created to layer with ease, building interiors that feel considered and cohesive—comfortable yet enveloping, intimate yet open.



SCAN NOW TO
ORDER SAMPLES

THE VELVET LOUNGE





STYLE FEATURED: SD400
 COLOR: CORNUCOPIA 407870
 TILE SIZE: 18" X 36"
 INSTALLATION METHOD: ASHLAR



April Showers
407865



Spring Forward
407866



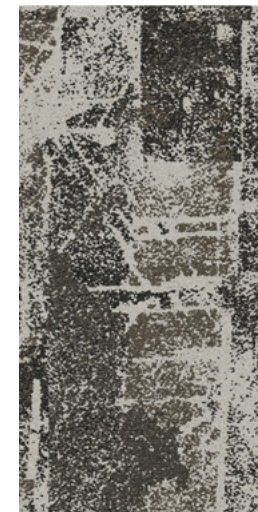
Backyard BBQ
407868



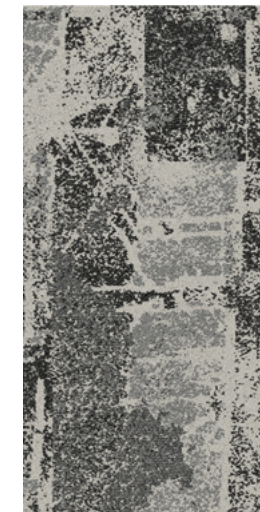
Allspice
407869



Cornucopia
407870



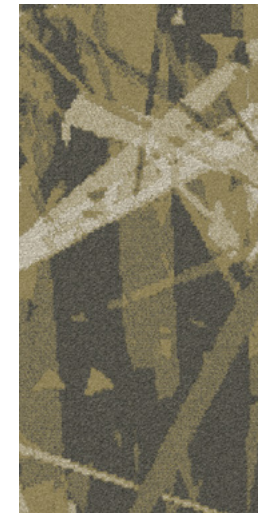
Snowday
407871



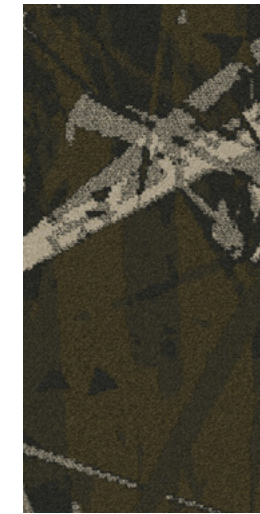
First Frost
407872



April Showers
407865



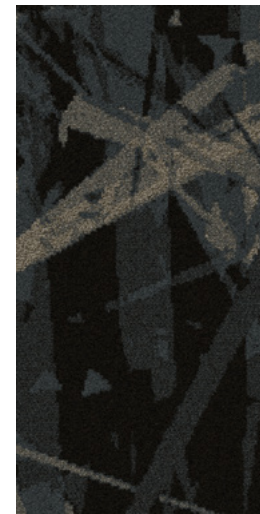
Spring Forward
407866



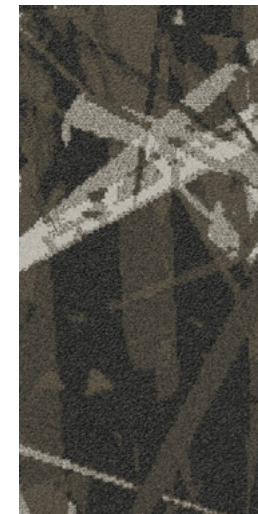
Backyard BBQ
407868



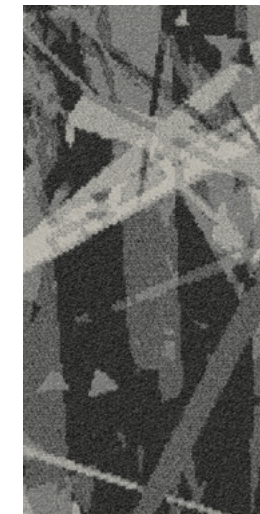
Allspice
407869



Cornucopia
407870



Snowday
407871



First Frost
407872

STYLE FEATURED: SD401

COLOR: APRIL SHOWERS 407865

TILE SIZE: 24" X 24"

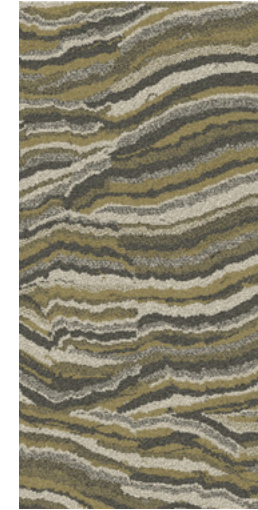
INSTALLATION METHOD: MONOLITHIC



STYLE FEATURED: SD402
 COLOR: BACKYARD BBQ 407868
 TILE SIZE: 18" X 36"
 INSTALLATION METHOD: ASHLAR



April Showers
407865



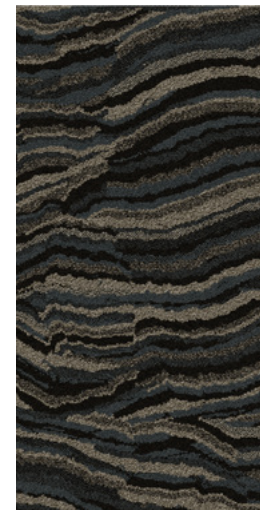
Spring Forward
407866



Backyard BBQ
407868



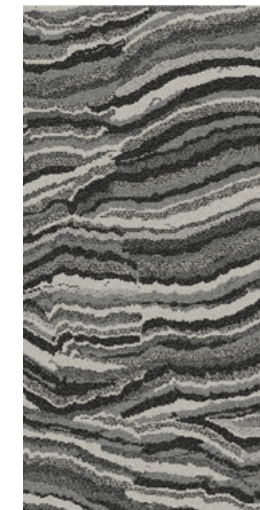
Allspice
407869



Cornucopia
407870



Snowday
407871



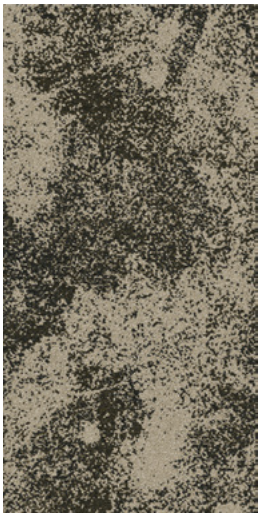
First Frost
407872



April Showers
407865



Spring Forward
407866



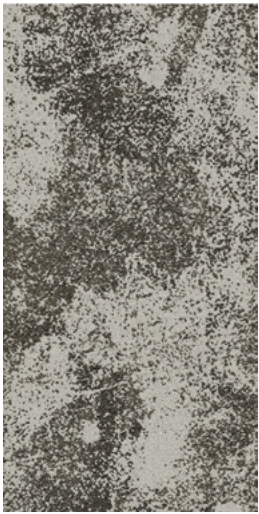
Backyard BBQ
407868



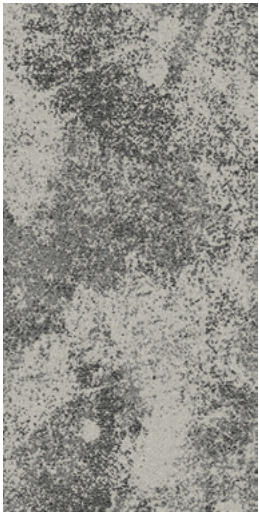
Allspice
407869



Cornucopia
407870



Snowday
407871



First Frost
407872

STYLE FEATURED: SD403

COLOR: ALLSPICE 407869

TILE SIZE: 18" X 36"

INSTALLATION METHOD: ASHLAR



STYLE FEATURED: SD404
COLOR: CORNUCOPIA 407870
TILE SIZE: 18" X 36"
INSTALLATION METHOD: ASHLAR



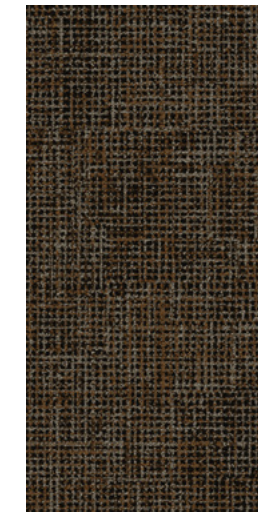
April Showers
407865



Spring Forward
407866



Backyard BBQ
407868



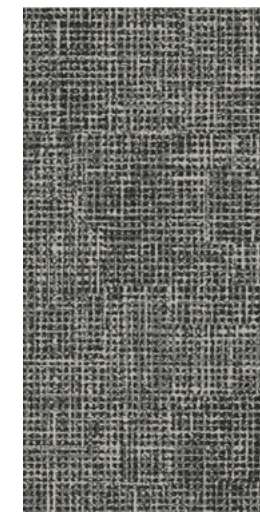
Allspice
407869



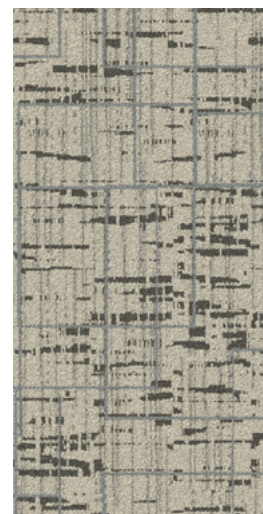
Cornucopia
407870



Snowday
407871



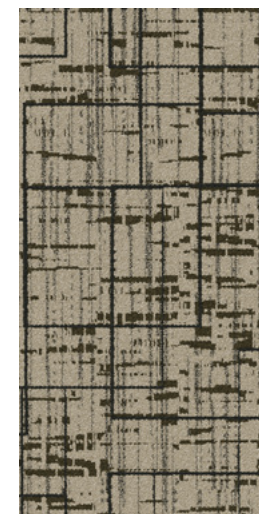
First Frost
407872



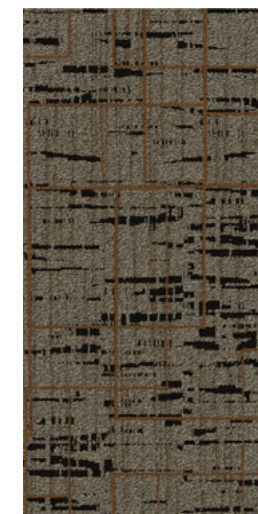
April Showers
407865



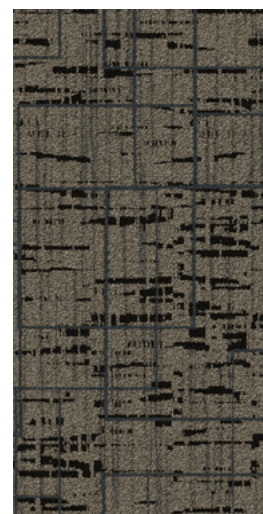
Spring Forward
407866



Backyard BBQ
407868



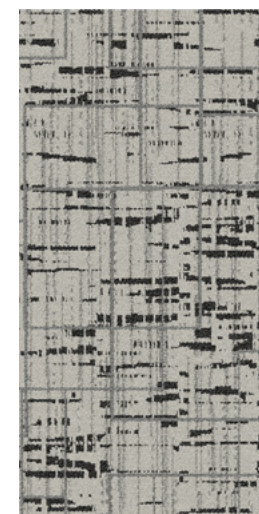
Allspice
407869



Cornucopia
407870



Snowday
407871



First Frost
407872

STYLE FEATURED: SD405
COLOR: SNOWDAY 407871
TILE SIZE: 24" X 24"
INSTALLATION METHOD: BRICK



STYLE FEATURED: SD406

COLOR: FIRST FROST 407872

TILE SIZE: 24" X 24"

INSTALLATION METHOD: BRICK



April Showers
407865



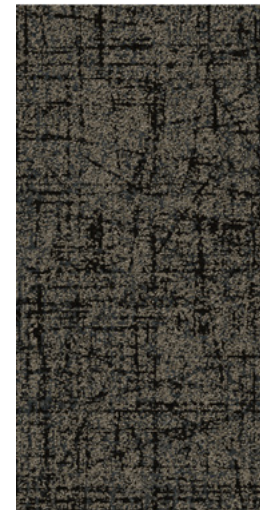
Spring Forward
407866



Backyard BBQ
407868



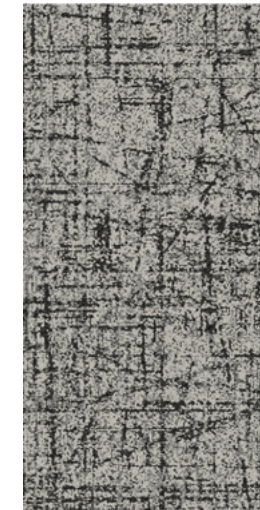
Allspice
407869



Cornucopia
407870



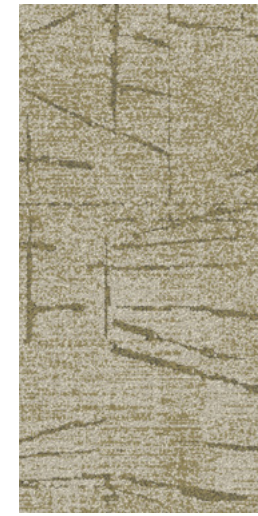
Snowday
407871



First Frost
407872



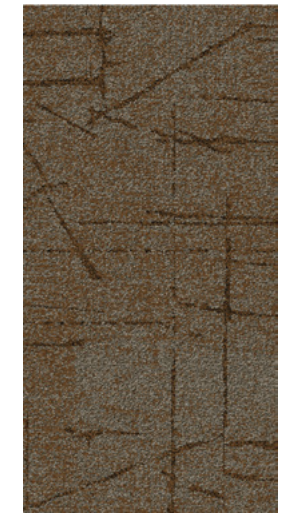
April Showers
407865



Spring Forward
407866



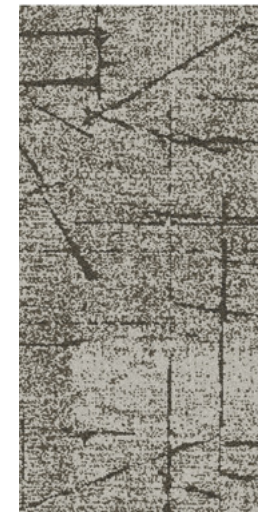
Backyard BBQ
407868



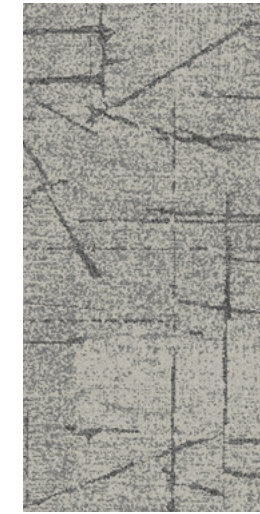
Allspice
407869



Cornucopia
407870



Snowday
407871



First Frost
407872

STYLE FEATURED: SD407

COLOR: APRIL SHOWERS 407865

TILE SIZE: 18" X 36"

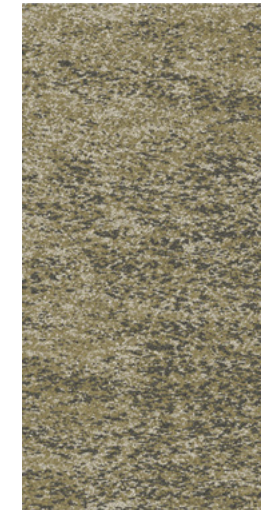
INSTALLATION METHOD: ASHLAR



STYLE FEATURED: SD408
 COLOR: BACKYARD BBQ 407868
 TILE SIZE: 18" X 36"
 INSTALLATION METHOD: ASHLAR



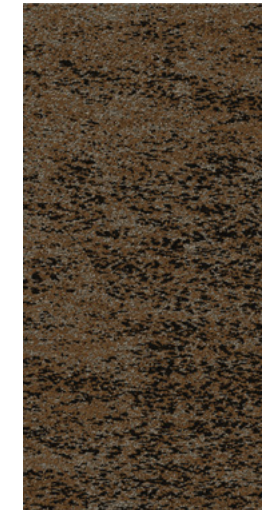
April Showers
407865



Spring Forward
407866



Backyard BBQ
407868



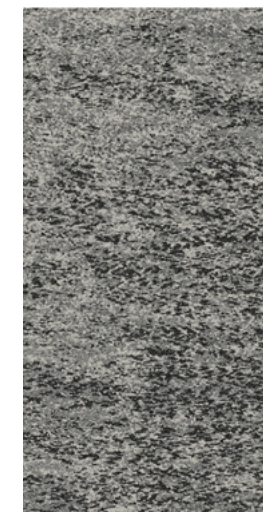
Allspice
407869



Cornucopia
407870



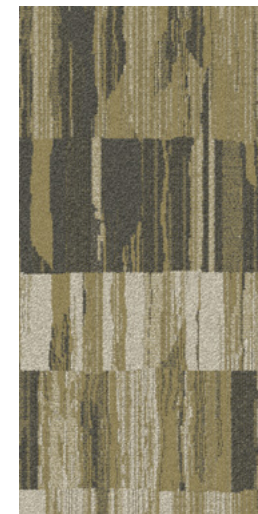
Snowday
407871



First Frost
407872



April Showers
407865



Spring Forward
407866



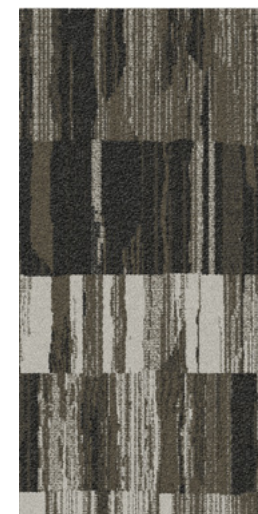
Backyard BBQ
407868



Allspice
407869



Cornucopia
407870



Snowday
407871



First Frost
407872

STYLE FEATURED: SD409
COLOR: ALLSPICE 407869
TILE SIZE: 24" X 24"
INSTALLATION METHOD: BRICK

STANDING OVATION

Every space deserves its moment. Standing Ovation explores the interplay of contrast through five Bentley styles in two distinct color expressions—one light and layered, the other dark and immersive. Together, they shape atmosphere with intention, creating focus and presence across a range of environments.

It is a series designed for impact—understanding precisely when to command attention and when to support the performance, allowing the entire vision to rise and be celebrated.

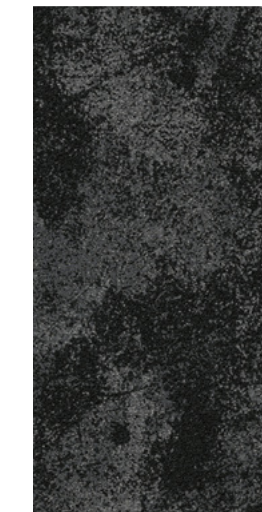


SCAN NOW TO
ORDER SAMPLES

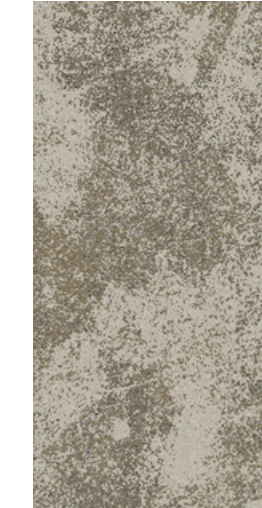




STYLE FEATURED: PST300
 COLOR: ART & SCIENCE 401487
 TILE SIZE: 18" X 36"
 INSTALLATION METHOD: ASHLAR



Art & Science
 401487



Abstraction
 401484



STYLE FEATURED: PST300
 COLOR: ART & SCIENCE 401487
 TILE SIZE: 18" X 36"
 INSTALLATION METHOD: ASHLAR



Art & Science
401487



Abstraction
401484

STYLE FEATURED: PST301
COLOR: ART & SCIENCE 401487
TILE SIZE: 18" X 36"
INSTALLATION METHOD: ASHLAR



STYLE FEATURED: PST302
COLOR: ABSTRACTON 401484
TILE SIZE: 18" X 36"
INSTALLATION METHOD: ASHLAR



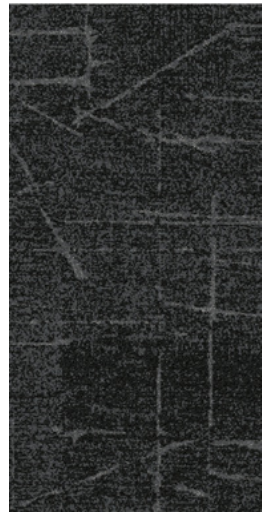
Art & Science
401487



Abstraction
401484



STYLE FEATURED: PST302
COLOR: ART & SCIENCE 401487
TILE SIZE: 18" X 36"
INSTALLATION METHOD: ASHLAR



Art & Science
401487



Abstraction
401484



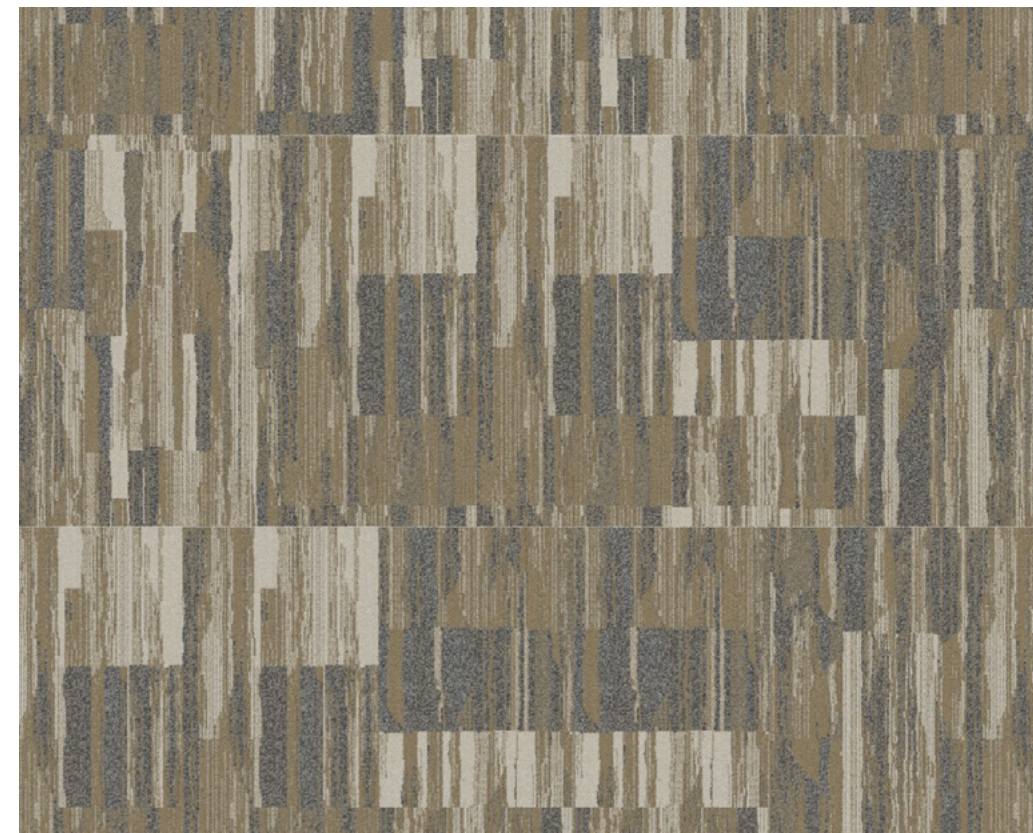
STYLE FEATURED: PST303
COLOR: ART & SCIENCE 401487
TILE SIZE: 18" X 36"
INSTALLATION METHOD: BRICK



Art & Science
401487



Abstraction
401484



STYLE FEATURED: PST304
COLOR: ABSTRACTION 401484
TILE SIZE: 18" X 36"
INSTALLATION METHOD: BRICK



SUSTAINABILITY

LOCATION

Made in California under the most stringent environmental regulations in the nation

In a **LEED-EB Gold Certified** Carpet Mill, the first manufacturing facility in the world to achieve LEED-EB Certification

Using **100% Renewable Energy**

HEALTH AND WELLNESS

Bentley's carpet is **PFAS free, Red List free, Antimicrobial free**, and has always been **PVC free**, since day one.

TRANSPARENCY

Cradle to Cradle®

NSF 140

CRI Green Label Plus certified carpet and adhesives meet CDPH 01350 for low emitting materials

Declare Label—Red List Free
3rd Party Verified to 100 ppm

Health Product Declaration (HPD)
3rd Party Verified to 100 ppm

Environmental Product Declaration (EPD)
3rd Party Verified Type III, Product Specific with $GWP < 7 \text{ kg CO}_2\text{e/m}^2$

CIRCULARITY

We're reshaping our supply chain to **recover waste** and include circular materials in every carpet product we make. We are reducing our dependence on virgin resources such as nylon and calcium carbonate, and turning waste and emissions into valuable resources, like **capturing and utilizing CO²** as a raw material. And with our **FulFill™** Carpet Reclamation program, we take back all carpet—any material, from any manufacturer.



Bentley's carpet products are manufactured in our California mill, a LEED Existing Buildings: Operations and Maintenance Gold certified facility. Product Certifications and Declarations can be found under the Sustainability section of our website. For more information, including additional backing options, detailed specifications, and warranties, please visit bentleymills.com. Carpet specifications and components are subject to normal manufacturing tolerances and may change without notice. Product warranted in accordance with the terms and conditions of Bentley's standard printed warranty in effect at time product is sold. All other warranties, including without limitation any implied warranties of merchantability or fitness for a particular purpose, are hereby disclaimed. Made in USA.

Warning: unauthorized reproduction of this carpet design constitutes copyright infringement. ©2026 Bentley Mills

For more info, visit bentleymills.com/sustainability

IN CONCERT SERIES

ELECTRIC NIGHTS

Style Name	LC500, LC501, LC502
Product Construction	Tufted Level Loop
Fiber	Bentley Premium™ Nylon
Dye Method	Solution Dyed

For complete product specifications, visit bentleymills.com

PVC-Free Backing Options	Size Options
AFIRMA II™ Hardback Tile:	18 in x 36 in, 24 in x 24 in
NexStep® Cushion Tile:	18 in x 36 in, 24 in x 24 in
LuxFelt™ Cushion Tile:	18 in x 36 in, 24 in x 24 in

THE VELVET LOUNGE

Style Name	SD400, SD401, SD402, SD403, SD404, SD405, SD406, SD407, SD408, SD409
Product Construction	Tufted Level Loop
Fiber	Bentley Premium™ Nylon
Dye Method	Solution Dyed

For complete product specifications, visit bentleymills.com

PVC-Free Backing Options	Size Options
AFIRMA II™ Hardback Tile:	18 in x 36 in, 24 in x 24 in
NexStep® Cushion Tile:	18 in x 36 in, 24 in x 24 in
LuxFelt™ Cushion Tile:	18 in x 36 in, 24 in x 24 in

UNDER THE SPOTLIGHT

Style Name	CC200, CC201, CC202, CC203, CC204, CC205, CC206, CC207, CC208
Product Construction	Tufted Level Loop
Fiber	Bentley Premium™ 6,6 Nylon
Dye Method	Solution Dyed

For complete product specifications, visit bentleymills.com

PVC-Free Backing Options	Size Options
AFIRMA II™ Hardback Tile:	18 in x 36 in, 24 in x 24 in
NexStep® Cushion Tile:	18 in x 36 in, 24 in x 24 in
LuxFelt™ Cushion Tile:	18 in x 36 in, 24 in x 24 in

STANDING OVATION

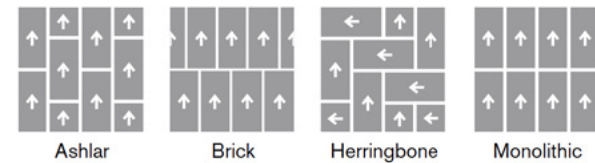
Style Name	PST300, PST301, PST302, PST303, PST304
Product Construction	Tufted Level Loop
Fiber	Bentley Premium™ Nylon
Dye Method	Solution Dyed

For complete product specifications, visit bentleymills.com

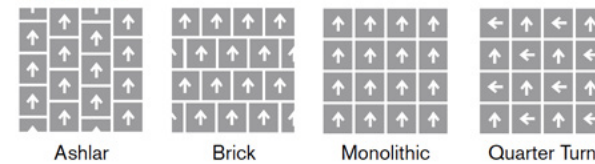
PVC-Free Backing Options	Size Options
AFIRMA II™ Hardback Tile:	18 in x 36 in, 24 in x 24 in
NexStep® Cushion Tile:	18 in x 36 in, 24 in x 24 in
LuxFelt™ Cushion Tile:	18 in x 36 in, 24 in x 24 in

RECOMMENDED CARPET TILE INSTALLATION METHODS

18 in x 36 in



24 in x 24 in



Need additional samples or information? 800.423.4709 | BENTLEYMILLS.COM

BENTLEY[®]
L O S A N G E L E S