



**BENTLEY™**  
LOS ANGELES

FAN CLUB



**BENTLEY**<sup>®</sup>  
L O S A N G E L E S



# FAN CLUB



If you know, you know.

Fan Club is the one you keep coming back to. The small-scale pattern with an outsized impact. Its texture anchors. Its colors connect. It carries a space or pulls it together.

It works on its own and works even better with everything else, moving effortlessly across our products and your projects. It just works. Simply. Beautifully. Again and again.

You're already a fan.

Now join the club.





LEFT PAGE:  
CENTER | FAN CLUB APRIL SHOWERS, 407865, 18 IN X 36 IN - MONOLITHIC  
LEFT | SD403 APRIL SHOWERS, 407865, 18 IN X 36 IN - MONOLITHIC

RIGHT PAGE:  
FAN CLUB CORNUCOPIA, 407870, 18 IN X 36 IN - MONOLITHIC



FOREGROUND | SD406 SPRING FORWARD, 407866, 18 IN X 36 IN - ASHLAR  
BACKGROUND | FAN CLUB SPRING FORWARD, 407866, 18 IN X 36 IN - ASHLAR





FAN CLUB SNOWDAY, 407871, 18 IN X 36 IN - HERRINGBONE  
SD404 SNOWDAY, 407871, 18 IN X 36 IN - HERRINGBONE  
LOWKEY LVT SUEDE, 804051, 9 IN X 48 IN - ASHLAR

RIGHT PAGE:  
FAN CLUB BACKYARD BBQ, 407868, 18 IN X 36 IN - MONOLITHIC

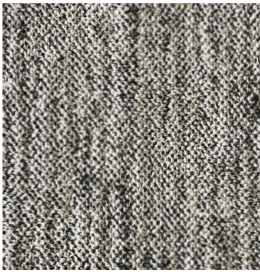




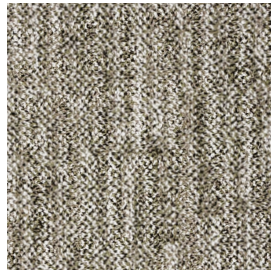
FAN CLUB ALLSPICE, 407869, 18 IN X 36 IN - HERRINGBONE



FAN CLUB



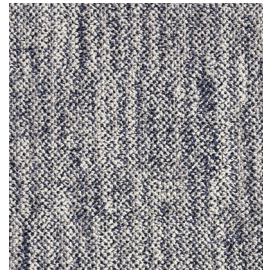
Slice and Dice 407984



Julienne 407985



Caramelize 407986



Zest 407987



Abstraction 407980



Art & Science 407981



Opalescent 407982



Radiant 407983



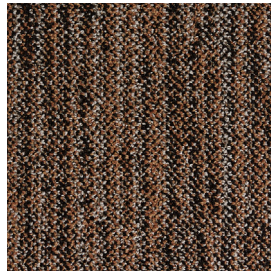
April Showers 407865



Spring Forward 407866



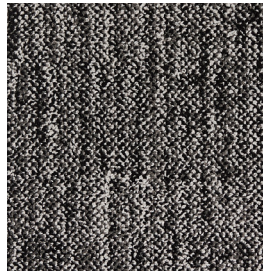
Backyard BBQ 407868



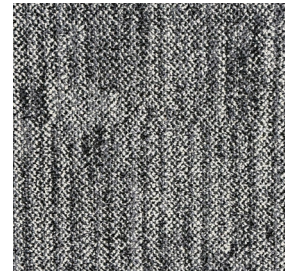
Allspice 407869



Cornucopia 407870



Snowday 407871



First Frost 407872

**Style Number** 6FCT8  
**Product Construction** Tufted Textured Loop  
**Fiber** Bentley Premium™ Nylon  
**Dye Method** Solution Dyed

For complete product specifications, visit [bentleymills.com](http://bentleymills.com)

**PVC Free Backing Options**  
 AFIRMA II™ Hardback Tile  
 NexStep® Cushion Tile  
 LuxFelt™ Cushion Tile  
 High PerformancePC Broadloom  
 EliteFlex™ Cushion

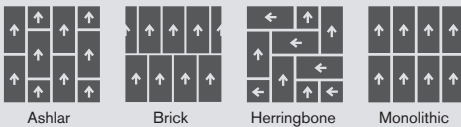
**Size Options**  
 18 in x 36 in, 24 in x 24 in  
 18 in x 36 in, 24 in x 24 in  
 18 in x 36 in, 24 in x 24 in  
 12 ft  
 6 ft

Scan QR code below for additional product information.

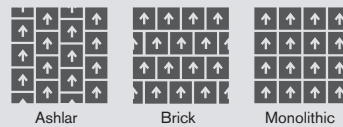


Recommended Carpet Tile Installation Methods - Fan Club

18 in x 36 in



24 in x 24 in



The printed images may not be an accurate reproduction of the product's actual colorways. We strive to offer an authentic representation, but images may vary according to press run and location lighting. These images are intended as a guide only. If you would like a sample of this product, please call Customer Care at 800.423.4709.



FAN CLUB JULIENNE 407985, BROADLOOM

## LOCATION

Made in California under the most stringent environmental regulations in the nation

In a **LEED-EB Gold Certified** Carpet Mill, the first manufacturing facility in the world to achieve LEED-EB Certification

Using **100% Renewable Energy**

## HEALTH AND WELLNESS

Bentley's carpet is **PFAS free, Red List free, Antimicrobial free, and PVC free**

## TRANSPARENCY

**Cradle to Cradle®**

**NSF 140**

**CRI Green Label Plus** certified carpet and adhesives meet CDPH 01350 for low emitting materials

**Declare Label—Red List Free**

3rd Party Verified to 100 ppm

**Health Product Declaration (HPD)**

3rd Party Verified to 100 ppm

**Environmental Product Declaration (EPD)**

3rd Party Verified Type III, Product Specific with GWP < 7 kg CO<sub>2</sub>e/m<sup>2</sup>

## CIRCULARITY

We're reshaping our supply chain to **recover waste** and include circular materials in every carpet product we make. We are reducing our dependence on virgin resources such as nylon and calcium carbonate, and turning waste and emissions into valuable resources, like **capturing and utilizing CO<sub>2</sub>** as a raw material.

And with our **FulFill™** Carpet Reclamation program, we take back all carpet—any material, from any manufacturer.

Bentley's carpet products are manufactured in our California mill, a LEED Existing Buildings: Operations and Maintenance Gold certified facility. Product Certifications and Declarations can be found under the Sustainability section of our website. For more information, including additional backing options, detailed specifications, and warranties, please visit [bentleymills.com](https://www.bentleymills.com).

Carpet specifications and components are subject to normal manufacturing tolerances and may change without notice. Product warranted in accordance with the terms and conditions of Bentley's standard printed warranty in effect at time product is sold. All other warranties, including without limitation any implied warranties of merchantability or fitness for a particular purpose, are hereby disclaimed. Made in USA. Warning: unauthorized reproduction of this carpet design constitutes copyright infringement. ©2026 Bentley Mills, Inc.

**Need additional samples or information?** 800.423.4709 | [bentleymills.com](https://www.bentleymills.com)

(BK-CP-0526)

**BENTLEY**  
LOS ANGELES



For more info, visit [bentleymills.com/sustainability](https://www.bentleymills.com/sustainability)

# Sustainability

**BENTLEY®**

Embracing our  
responsibility  
in commercial  
flooring.

**BENTLEY™**  
L O S A N G E L E S

800.423.4709 | BENTLEYMILLS.COM

14641 EAST DON JULIAN ROAD, CITY OF INDUSTRY, CALIFORNIA 91746