

**LAND/  
MARK**

11316315714-8W  
6836

**BENTLEY**  
LOS ANGELES

# LAND/ MARK



DESIGN BY  
*chris green*  
**NEUTRAL  
HAUS**



IT'S NOT ABOUT MONUMENTS OR  
BIG GESTURES, IT'S ABOUT THE  
GROUND WE MOVE ACROSS.

KNOW BY HEART, LATE GOLD 408458, 9 IN X 36 IN, ASHLAR



Memory  
has  
texture.

KNOW BY HEART

OLD HAUNTS

WHERE WE MET

IT'S A RECORD OF THE  
MARKS LEFT BEHIND WHEN  
PEOPLE SHOW UP OVER TIME.



WHERE WE MET, SMOKED LINEN 408454,  
9 IN X 36 IN, MONOLITHIC



OLD HAUNTS, DRIFT OAK 408459, 9 IN X 36 IN, ASHLAR



KNOW BY HEART, HAZE WHITE 408450, 9 IN X 36 IN, ASHLAR



WHAT IF THE MOST MEANINGFUL SPACES  
ARE SHAPED QUIETLY OVER TIME?



OLD HAUNTS, CUT STONE 408456, 9 IN X 36 IN, ASHLAR

KNOW BY HEART, KILN CLAY 408451, 9 IN X 36 IN, ASHLAR

A FLOOR YOU CROSSED  
100S OF TIMES.



WHERE WE MET, KILN CLAY 408451, 9 IN X 36 IN, ASHLAR

A PLACE WHERE ENERGY GATHERED AND  
JUST BEING THERE, AGAIN AND AGAIN,

LEFT A MARK.





KNOW BY HEART & OLD HAUNTS, DRIFT OAK 408459, 9 IN X 36 IN, ASHLAR



KNOW BY HEART & OLD HAUNTS, DRIFT OAK 408459, 9 IN X 36 IN, ASHLAR

AND OVER TIME, THOSE TRACES ..

# TURN ORDINARY GROUND



OLD HAUNTS, HAZE WHITE 408450, 9 IN X 36 IN, HERRINGBONE



**into  
SOMETHING  
MEANINGFUL**

KNOW BY HEART, HAZE WHITE 408450, 9 IN X 36 IN, ASHLAR

OLD HAUNTS, SMOKED LINEN 408454, 9 IN X 36 IN, HERRINGBONE

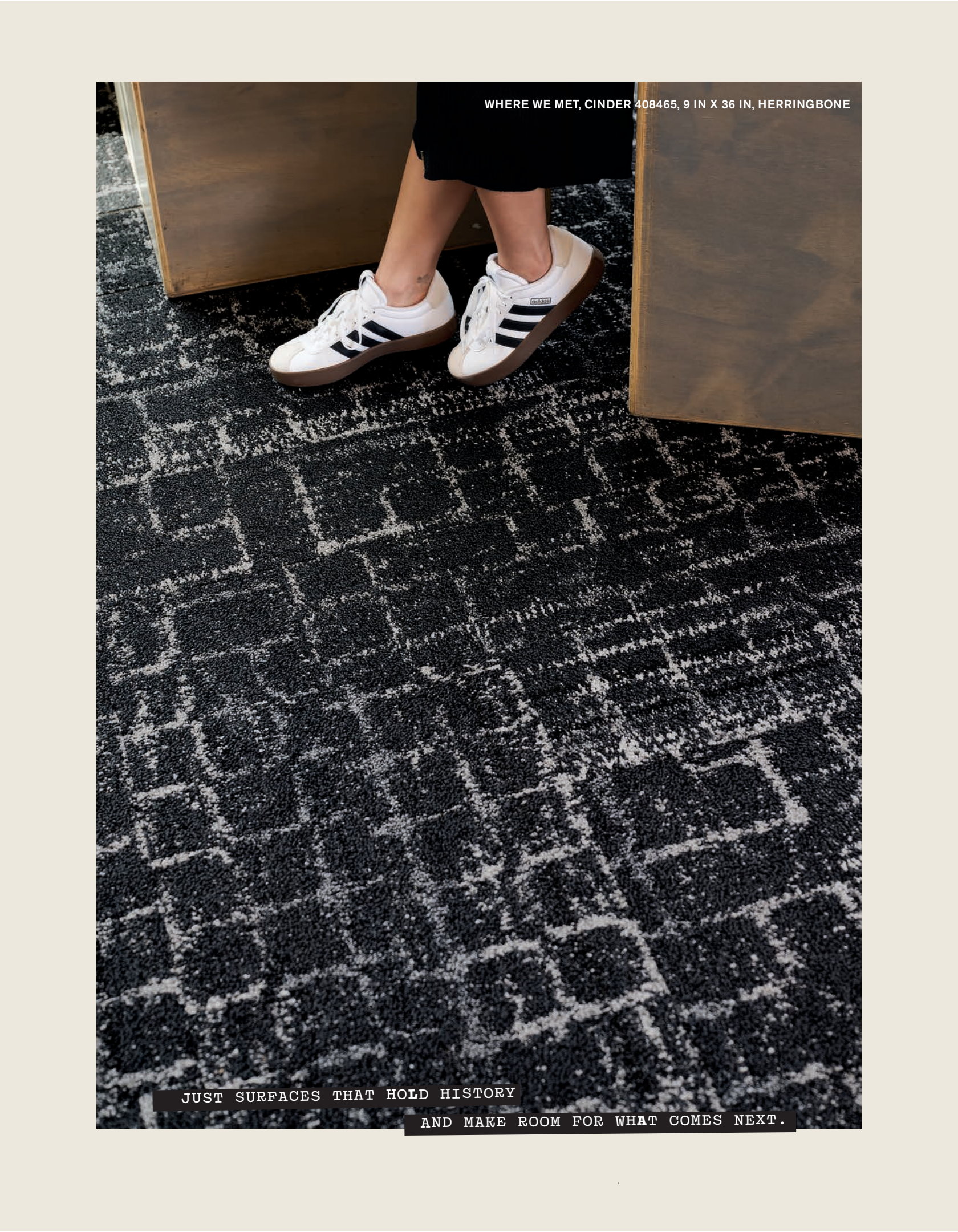


NOT SPECTACLE. NOT ORNAMENT.

NOT STYLED. LIVED IN.



11316315714-8W  
6836



WHERE WE MET, CINDER 408465, 9 IN X 36 IN, HERRINGBONE

JUST SURFACES THAT HOLD HISTORY

AND MAKE ROOM FOR WHAT COMES NEXT.

KNOW BY HEART



HAZE WHITE  
408450



KILN CLAY  
408451



CLAY CHAR  
408452



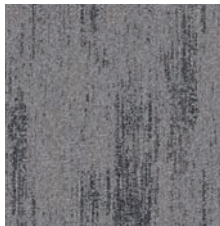
WARM CHAR  
408453



SMOKED LINEN  
408454



FADED QUARRY  
408455



CUT STONE  
408456



LEDGE SHADOW  
408457



LATE GOLD  
408458



DRIFT OAK  
408459



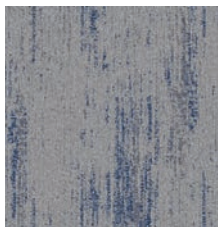
HEARTWOOD  
408460



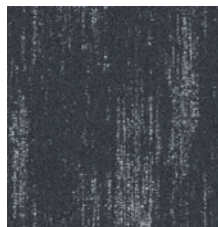
MOSS CHAR  
408461



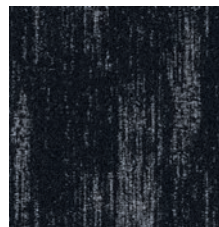
MARKED WHITE  
408462



SLACK WATER  
408463



QUIET SHADOW  
408464



CINDER  
408465



**Style Number** 6KH20  
**Product Construction** Tufted Textured Loop  
**Fiber** Bentley Premium™ Nylon  
**Dye Method** Solution Dyed

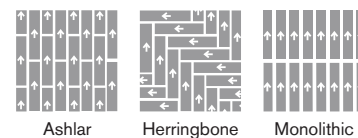
For complete product specifications, visit [bentleymills.com](http://bentleymills.com)

**PVC-Free Backing Options Size Options**

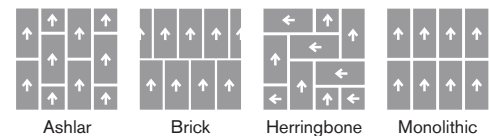
AFIRMA II™ Hardback Tile: 9 in x 36 in, 18 in x 36 in, 24 in x 24 in  
 NexStep® Cushion Tile: 9 in x 36 in, 18 in x 36 in, 24 in x 24 in  
 LuxFelt™ Cushion Tile: 9 in x 36 in, 18 in x 36 in, 24 in x 24 in

**Recommended Carpet Tile Installation Methods**

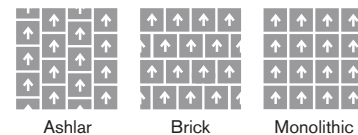
9 in x 36 in



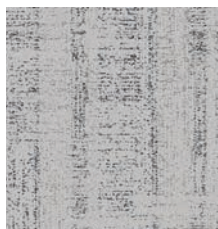
18 in x 36 in



24 in x 24 in



OLD HAUNTS



HAZE WHITE  
408450



KILN CLAY  
408451



CLAY CHAR  
408452



WARM CHAR  
408453



SMOKED LINEN  
408454



FADED QUARRY  
408455



CUT STONE  
408456



LEDGE SHADOW  
408457



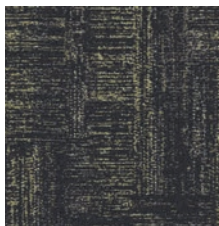
LATE GOLD  
408458



DRIFT OAK  
408459



HEARTWOOD  
408460



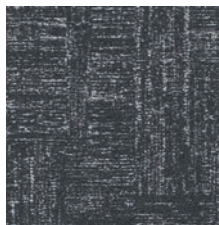
MOSS CHAR  
408461



MARKED WHITE  
408462



SLACK WATER  
408463



QUIET SHADOW  
408464



CINDER  
408465



**Style Number** 6OL20  
**Product Construction** Tufted Textured Loop  
**Fiber** Bentley Premium™ Nylon  
**Dye Method** Solution Dyed

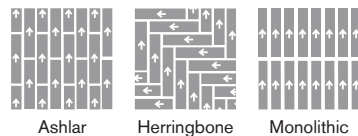
For complete product specifications, visit [bentleymills.com](http://bentleymills.com)

**PVC-Free Backing Options Size Options**

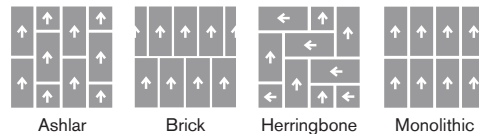
AFIRMA II™ Hardback Tile: 9 in x 36 in, 18 in x 36 in, 24 in x 24 in  
 NexStep® Cushion Tile: 9 in x 36 in, 18 in x 36 in, 24 in x 24 in  
 LuxFelt™ Cushion Tile: 9 in x 36 in, 18 in x 36 in, 24 in x 24 in

Recommended Carpet Tile Installation Methods

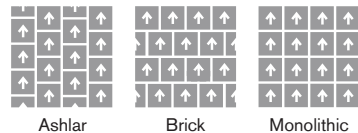
9 in x 36 in



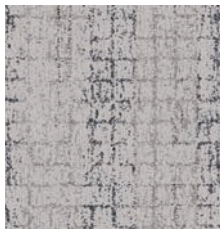
18 in x 36 in



24 in x 24 in



WHERE WE MET



HAZE WHITE  
408450



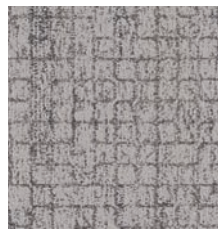
KILN CLAY  
408451



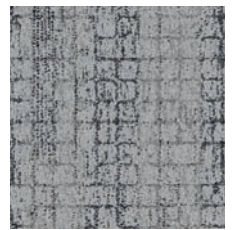
CLAY CHAR  
408452



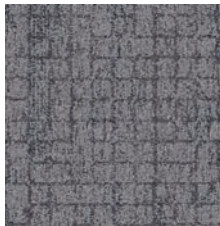
WARM CHAR  
408453



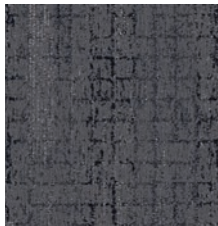
SMOKED LINEN  
408454



FADED QUARRY  
408455



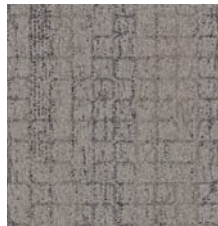
CUT STONE  
408456



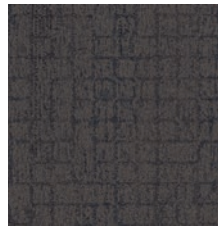
LEDGE SHADOW  
408457



LATE GOLD  
408458



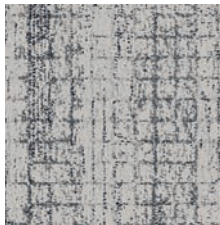
DRIFT OAK  
408459



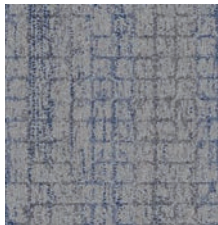
HEARTWOOD  
408460



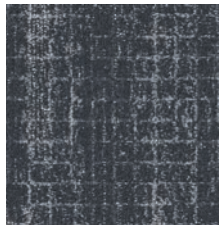
MOSS CHAR  
408461



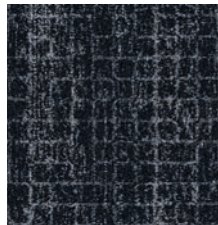
MARKED WHITE  
408462



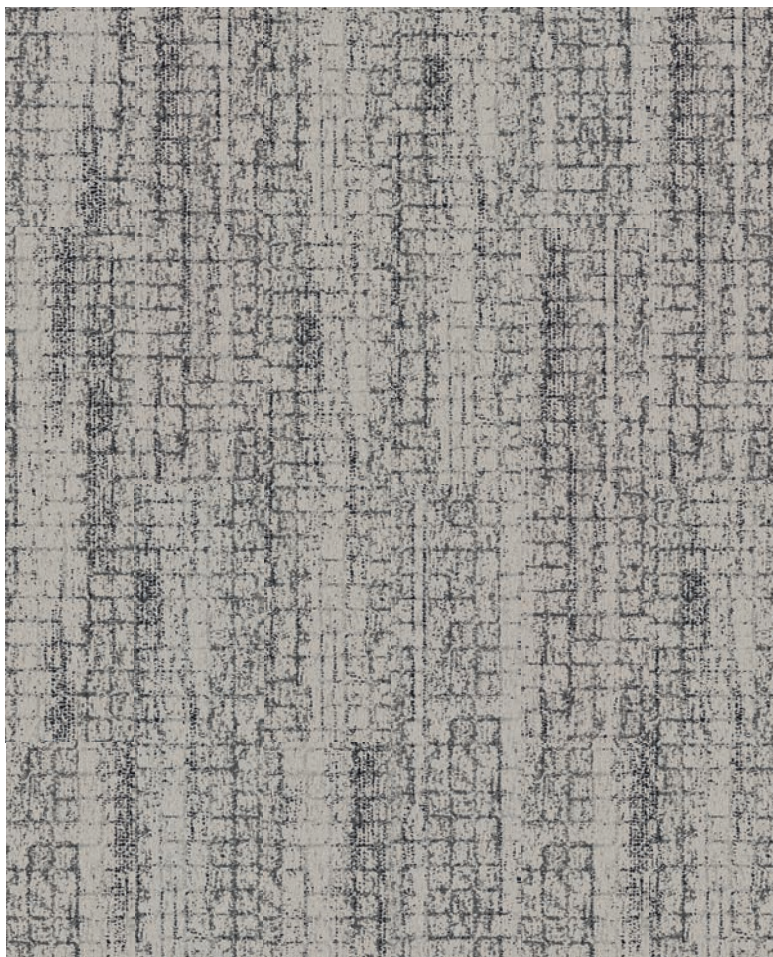
SLACK WATER  
408463



QUIET SHADOW  
408464



CINDER  
408465



**Style Number** 6WM20  
**Product Construction** Tufted Textured Loop  
**Fiber** Bentley Premium™ Nylon  
**Dye Method** Solution Dyed

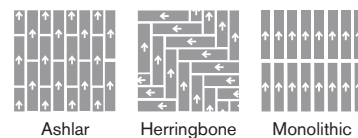
For complete product specifications, visit [bentleymills.com](http://bentleymills.com)

**PVC-Free Backing Options Size Options**

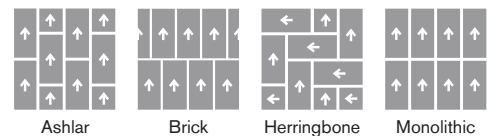
AFIRMA II™ Hardback Tile: 9 in x 36 in, 18 in x 36 in, 24 in x 24 in  
 NexStep® Cushion Tile: 9 in x 36 in, 18 in x 36 in, 24 in x 24 in  
 LuxFelt™ Cushion Tile: 9 in x 36 in, 18 in x 36 in, 24 in x 24 in

**Recommended Carpet Tile Installation Methods**

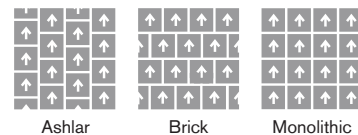
9 in x 36 in



18 in x 36 in



24 in x 24 in





## LOCATION

**Made in California** under the most stringent environmental regulations in the nation.

In a **LEED-EB Gold Certified** Carpet Mill, the first manufacturing facility in the world to achieve LEED-EB Certification.

Using **100% Renewable Energy**

## HEALTH AND WELLNESS

Bentley's carpet is **PFAS free, Red List free, Antimicrobial free, and PVC free.**

## TRANSPARENCY

**Cradle to Cradle®**

**NSF 140**

**CRI Green Label Plus** certified carpet and adhesives meet CDPH 01350 for low emitting materials

**Declare Label—Red List Free**  
3rd Party Verified to 100 ppm

**Health Product Declaration (HPD)**  
3rd Party Verified to 100 ppm

**Environmental Product Declaration (EPD)**  
3rd Party Verified Type III, Product Specific with GWP < 7 kg CO<sub>2</sub>e/m<sup>2</sup>

## CIRCULARITY

We're reshaping our supply chain to **recover waste** and include circular materials in every carpet product we make. We are reducing our dependence on virgin resources such as nylon and calcium carbonate, and turning waste and emissions into valuable resources, like **capturing and utilizing CO<sub>2</sub>** as a raw material. And with our **FulFill™** Carpet Reclamation program, we take back all carpet—any material, from any manufacturer.

Bentley's carpet products are manufactured in our California mill, a LEED Existing Buildings: Operations and Maintenance Gold certified facility. Product Certifications and Declarations can be found under the Sustainability section of our website. For more information, including additional backing options, detailed specifications, and warranties, please visit [bentleymills.com](http://bentleymills.com). Carpet specifications and components are subject to normal manufacturing tolerances and may change without notice. Product warranted in accordance with the terms and conditions of Bentley's standard printed warranty in effect at time product is sold. All other warranties, including without limitation any implied warranties of merchantability or fitness for a particular purpose, are hereby disclaimed. Made in USA.

Warning: unauthorized reproduction of this carpet design constitutes copyright infringement. ©2026 Bentley Mills



**For more info, visit [bentleymills.com/sustainability](http://bentleymills.com/sustainability)**

# Responsibility

BENTLEY®

Redefining  
sustainability  
in commercial  
flooring.

Memory  
has  
texture.

BENTLEY®  
LOS ANGELES

